

Grundwasserstände

Nr. 6224 Hubletzen 4/09 - Cham

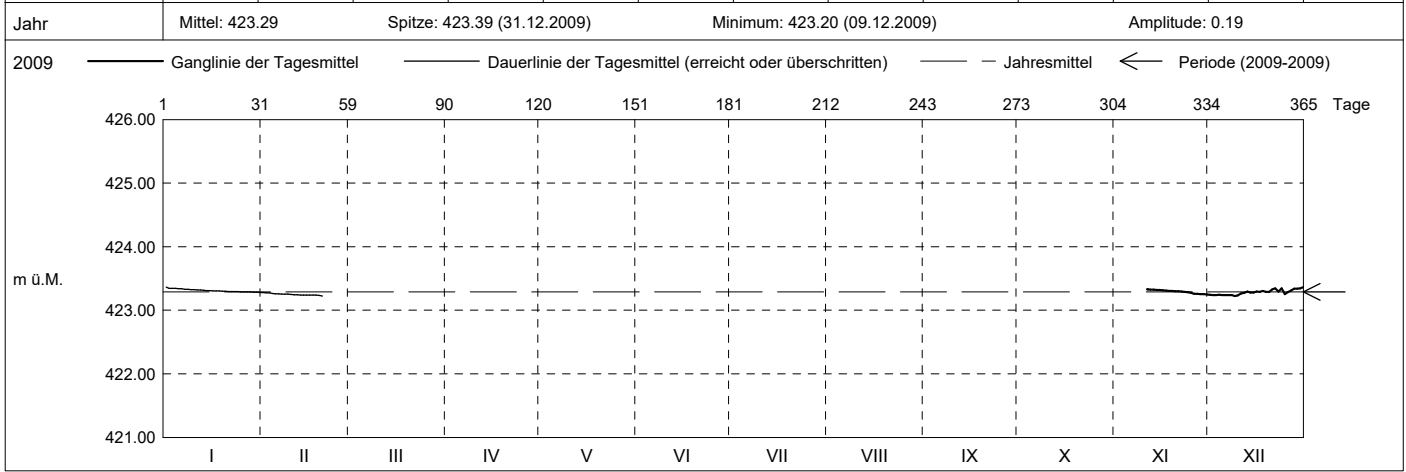
KANTON ZUG

Koordinaten: 2'675'352' / 1'230'219'

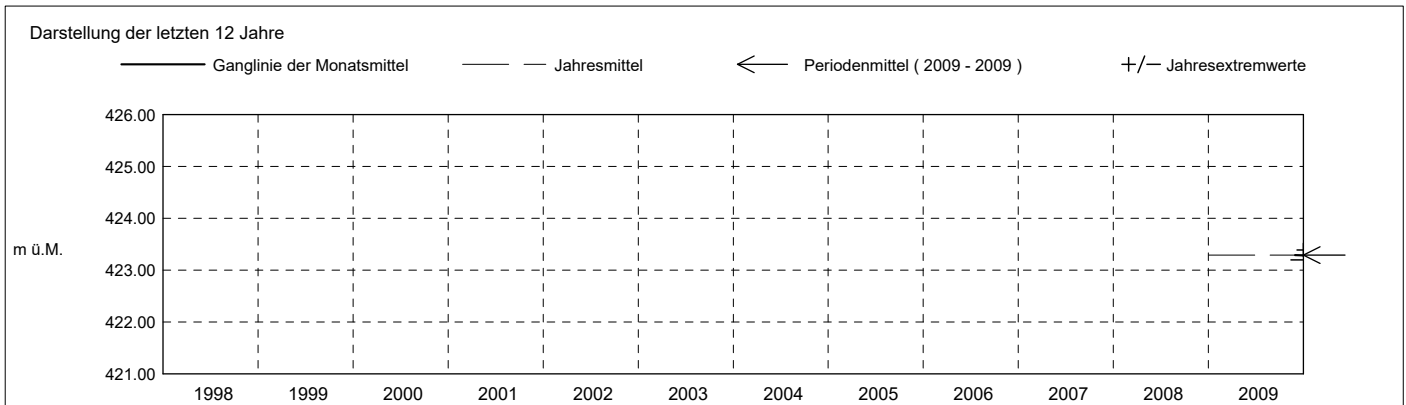
Amt für Umwelt

Abstichpunkt: 439.99 m ü.M. OK Terrain: 440.16 m ü.M.

2009		janvier	février	mars	avril	mai	juin	juillet	août	septembre	octobre	novembre	décembre		
Tagesmittel	1												423.24	1	
	2												423.24	2	
	3												423.24	3	
	4												423.24	4	
	5												423.24	5	
	6												423.24	6	
	7												423.24	7	
	8												423.24	8	
	9												423.22 -	9	
	10												423.24	10	
m ü.M.	11											423.33 +	423.26	11	
	12											423.33 +	423.27	12	
	13											423.32	423.29	13	
	14											423.32	423.28	14	
	15											423.32	423.28	15	
	16											423.31	423.29	16	
	17											423.31	423.29	17	
	18											423.31	423.30	18	
	19											423.30	423.29	19	
	20											423.30	423.29	20	
+ Maximum	21											423.30	423.33	21	
	22											423.29	423.35	22	
	23											423.29	423.30	23	
	24											423.28	423.35	24	
	25											423.28	423.25	25	
	26											423.26	423.29	26	
	27											423.26	423.31	27	
	- Minimum	28											423.25 -	423.34	28
		29											423.26	423.34	29
		30											423.25 -	423.35	30
		31											423.25 -	423.36 +	31
Monatsmittel											423.29 +	423.28 -	m ü.M.		
Spitze Datum											423.33 - 11.	423.39 + 31.	m ü.M.		
Amplitude											0.09 -	0.19 +	m		
Jahr	Mittel: 423.29		Spitze: 423.39 (31.12.2009)				Minimum: 423.20 (09.12.2009)				Amplitude: 0.19				



Periode 2009 - 2009 (0 Jahre)													
Monatsmittel	0.00 -	0.00 -	0.00 -	0.00 -	0.00 -	0.00 -	0.00 -	0.00 -	0.00 -	0.00 -	423.29 +	423.28	m ü.M.
Monats-Spitze Jahr											423.33 - 2009	423.39 + 2009	m ü.M.
Monats-Minimum Jahr											423.24 + 2009	423.20 - 2009	m ü.M.
Monats-Amplitude Jahr											0.09 - 2009	0.19 + 2009	m ü.M.
Periode	Mittel: 423.29		Spitze: 423.39 (31.12.2009)				Minimum: 423.20 (09.12.2009)				Amplitude: 0.19		



Grundwasserstände

Nr. 6224 Hubletzen 4/09 - Cham

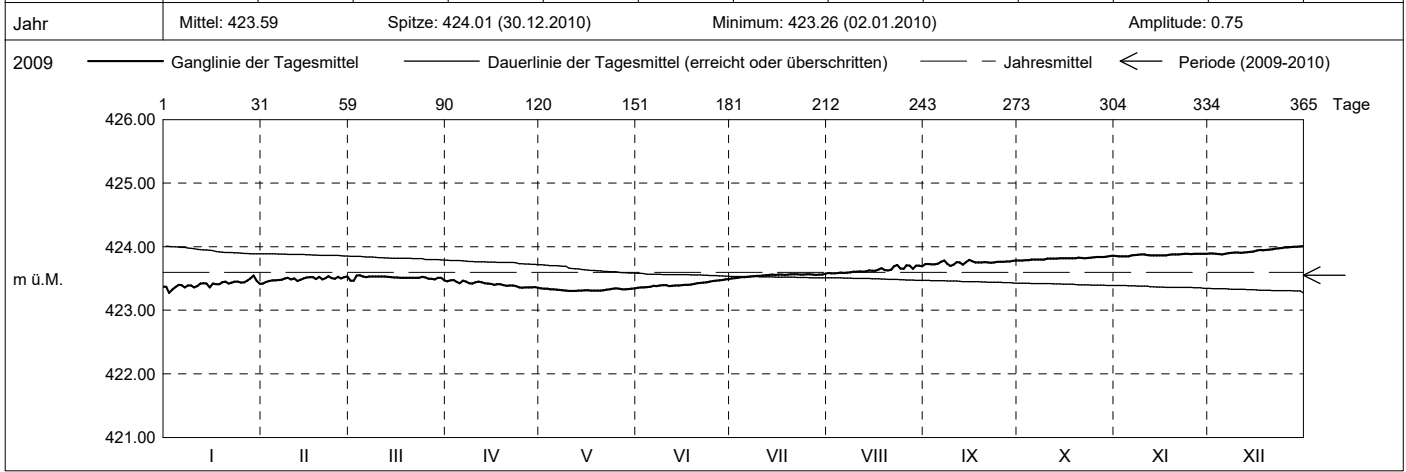
KANTON ZUG

Koordinaten: 2'675'352' / 1'230'219'

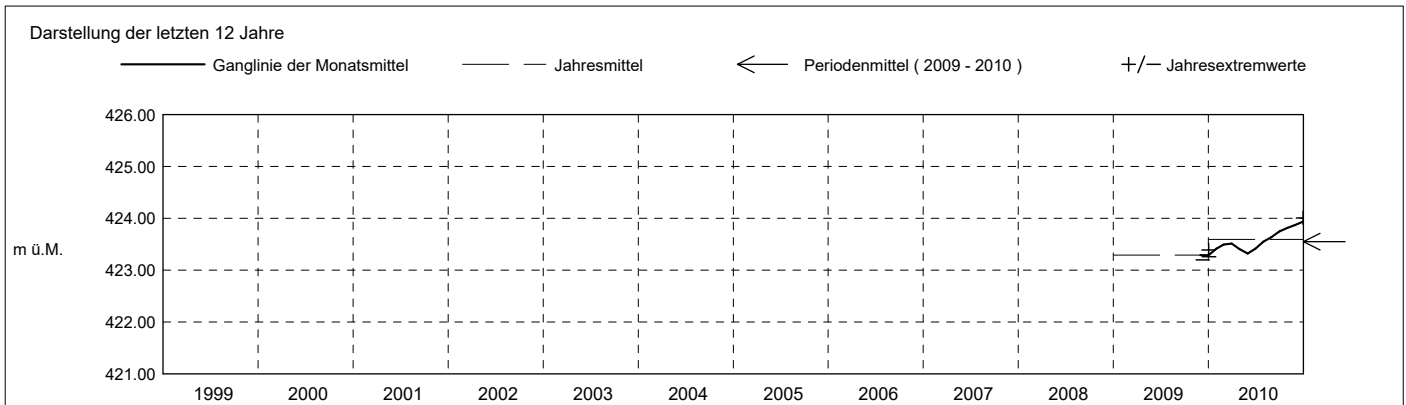
Amt für Umwelt

Abstichpunkt: 439.99 m ü.M. OK Terrain: 440.16 m ü.M.

2010	janvier	février	mars	avril	mai	juin	juillet	août	septembre	octobre	novembre	décembre		
Tagesmittel	1	423.37	423.42 -	423.47	423.46	423.34	423.36 -	423.50 -	423.58 -	423.73	423.78 -	423.85 -	423.89	1
	2	423.28 -	423.45	423.46 -	423.47	423.34	423.36 -	423.51	423.58 -	423.73	423.78 -	423.85 -	423.89	2
	3	423.33	423.46	423.54	423.48 +	423.34	423.36 -	423.51	423.58 -	423.72	423.79	423.85 -	423.89	3
	4	423.36	423.47	423.55 +	423.45	423.33	423.37	423.52	423.59	423.72	423.79	423.85 -	423.88 -	4
	5	423.40	423.47	423.53	423.42	423.33	423.37	423.52	423.59	423.73	423.80	423.85 -	423.88 -	5
	6	423.40	423.47	423.52	423.46	423.33	423.38	423.53	423.59	423.76	423.80	423.86	423.89	6
	7	423.36	423.48	423.53	423.45	423.32	423.38	423.53	423.59	423.78	423.80	423.87	423.90	7
	8	423.39	423.50	423.53	423.42	423.31	423.39	423.54	423.60	423.73	423.80	423.87	423.90	8
	9	423.39	423.51	423.53	423.42	423.31	423.40	423.54	423.61	423.70 -	423.80	423.88	423.91	9
	10	423.36	423.49	423.53	423.44	423.30 -	423.39	423.54	423.61	423.72	423.81	423.88	423.91	10
m ü.M.	11	423.38	423.50	423.53	423.45	423.30 -	423.38	423.55	423.61	423.76	423.81	423.87	423.90	11
	12	423.42	423.46	423.53	423.44	423.30 -	423.39	423.55	423.61	423.75	423.81	423.86	423.91	12
	13	423.42	423.48	423.53	423.42	423.31	423.39	423.55	423.61	423.72	423.82	423.86	423.91	13
	14	423.42	423.50	423.52	423.42	423.31	423.39	423.56	423.63	423.76	423.82	423.86	423.92	14
	15	423.36	423.51	423.52	423.41	423.32	423.40	423.56	423.62	423.79 +	423.82	423.86	423.92	15
	16	423.42	423.52	423.51	423.40	423.32	423.40	423.56	423.62	423.77	423.82	423.86	423.94	16
	17	423.41	423.52	423.51	423.41	423.31	423.40	423.56	423.64	423.75	423.82	423.86	423.95	17
	18	423.41	423.49	423.51	423.41	423.31	423.40	423.56	423.66	423.75	423.82	423.87	423.94	18
	19	423.44	423.52	423.51	423.40	423.31	423.41	423.56	423.63	423.75	423.82	423.88	423.95	19
	20	423.45	423.48	423.51	423.38	423.31	423.42	423.56	423.63	423.76	423.83	423.88	423.96	20
+ Maximum	21	423.42	423.51	423.51	423.39	423.31	423.43	423.57 +	423.64	423.75	423.82	423.88	423.96	21
	22	423.43	423.54 +	423.51	423.39	423.33	423.44	423.57 +	423.69	423.75	423.82	423.89 +	423.97	22
	23	423.45	423.51	423.51	423.38	423.33	423.44	423.56	423.71 +	423.75	423.82	423.89 +	423.97	23
	24	423.45	423.49	423.52	423.36	423.34	423.45	423.56	423.65	423.76	423.83	423.89 +	423.98	24
	25	423.43	423.52	423.52	423.36	423.34	423.46	423.57 +	423.65	423.76	423.83	423.89 +	423.99	25
	26	423.44	423.50	423.50	423.36	423.34	423.47	423.57 +	423.71 +	423.77	423.84	423.89 +	423.99	26
	27	423.46	423.52	423.50	423.36	423.33	423.47	423.56	423.70	423.77	423.84	423.89 +	423.99	27
	28	423.50	423.53	423.48	423.36	423.33	423.48	423.55	423.65	423.77	423.84	423.89 +	424.00	28
	29	423.54 +	423.49	423.51	423.36	423.33	423.49 +	423.56	423.70	423.78	423.84	423.89 +	424.00	29
	30	423.46	423.51	423.51	423.35 -	423.34	423.49 +	423.56	423.70	423.78	423.85	423.89 +	424.01 +	30
31	423.42	423.47	423.47	423.35 +	423.35 +	423.49 +	423.57 +	423.69	423.78	423.86 +	423.89 +	424.01 +	31	
Monatsmittel	423.41	423.49	423.51	423.41	423.32 -	423.41	423.55	423.63	423.75	423.82	423.87	423.94 +	m ü.M.	
Spitze Datum	423.57 29.	423.61 28.	423.59 3.	423.49 2.	423.35 - 1.	423.50 30.	423.59 21.	423.75 26.	423.80 15.	423.86 30.	423.89 22.	424.01 + 30.	m ü.M.	
Amplitude	0.31 +	0.20	0.13	0.14	0.05	0.15	0.09	0.17	0.11	0.08	0.04 -	0.13	m	
Jahr	Mittel: 423.59 Spitze: 424.01 (30.12.2010) Minimum: 423.26 (02.01.2010) Amplitude: 0.75													



Periode	2009 - 2010 (1 Jahre)												
Monatsmittel	423.41	423.49	423.51	423.41	423.32 -	423.41	423.55	423.63	423.75	423.82 +	423.58	423.61	m ü.M.
Monats-Spitze Jahr	423.57 2010	423.61 2010	423.59 2010	423.49 2010	423.35 - 2010	423.50 2010	423.59 2010	423.75 2010	423.80 2010	423.86 2010	423.89 2010	424.01 + 2010	m ü.M.
Monats-Minimum Jahr	423.26 2010	423.41 2010	423.46 2010	423.35 2010	423.30 2010	423.35 2010	423.50 2010	423.58 2010	423.69 2010	423.78 + 2010	423.24 2009	423.20 - 2009	m ü.M.
Monats-Amplitude Jahr	0.31 + 2010	0.20 2010	0.13 2010	0.14 2010	0.05 - 2010	0.15 2010	0.09 2010	0.17 2010	0.11 2010	0.08 2010	0.09 2009	0.19 2009	m ü.M.
Periode	Mittel: 423.55 Spitze: 424.01 (30.12.2010) Minimum: 423.20 (09.12.2009) Amplitude: 0.81												



Grundwasserstände

Nr. 6224 Hubletzen 4/09 - Cham

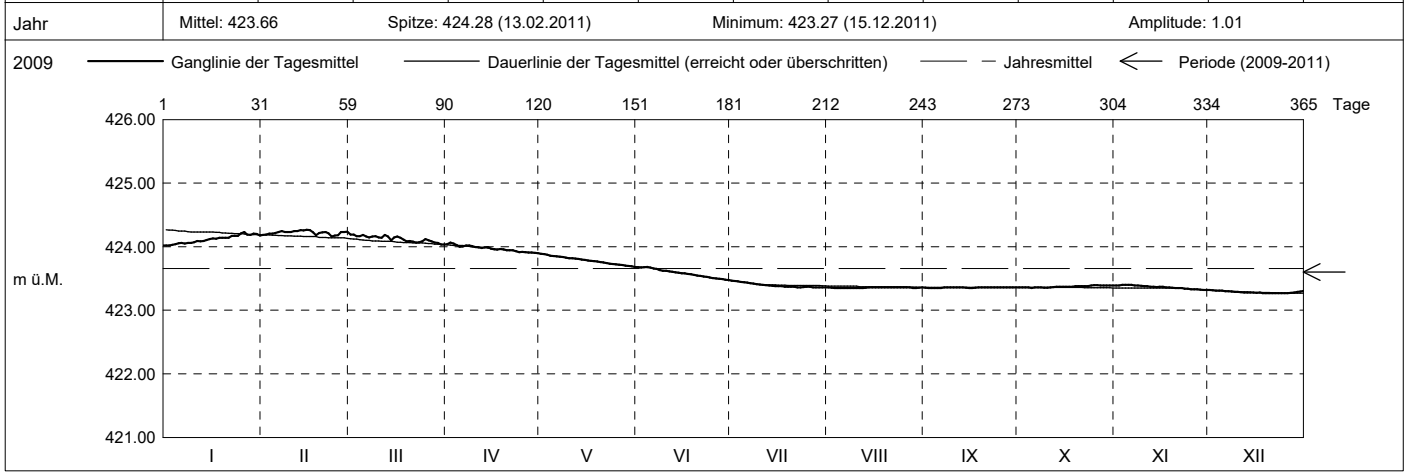
KANTON ZUG

Koordinaten: 2'675'352' / 1'230'219'

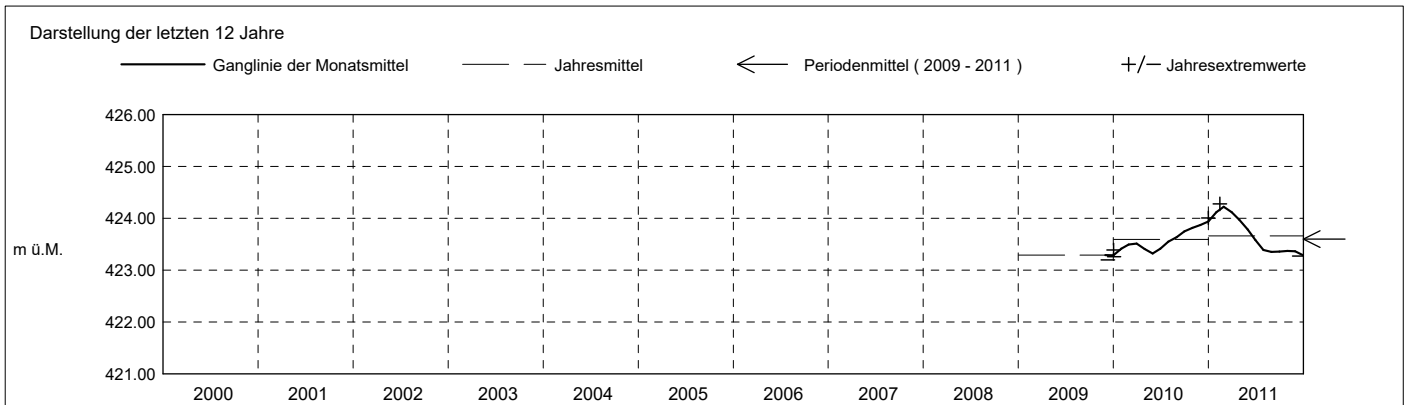
Amt für Umwelt

Abstichpunkt: 439.99 m ü.M. OK Terrain: 440.16 m ü.M.

2011	janvier	février	mars	avril	mai	juin	juillet	août	septembre	octobre	novembre	décembre	
Tagesmittel	1 424.02 -	424.18	424.19 +	424.04	423.89 +	423.68 +	423.47 +	423.36 +	423.35 -	423.36	423.39	423.32 +	1
	2 424.02 -	424.19	424.19 +	424.06 +	423.88	423.67	423.46	423.35 -	423.35 -	423.36	423.39	423.32 +	2
	3 424.03	424.21	424.17	424.05	423.88	423.68 +	423.45	423.35 -	423.35 -	423.36	423.40 +	423.31	3
	4 424.04	424.21	424.17	424.02	423.86	423.68 +	423.45	423.35 -	423.35 -	423.36	423.40 +	423.31	4
	5 424.06	424.21	424.18	424.00	423.85	423.67	423.44	423.35 -	423.35 -	423.35 -	423.40 +	423.31	5
	6 424.06	424.23	424.16	424.01	423.85	423.66	423.43	423.35 -	423.35 -	423.36	423.40 +	423.30	6
	7 424.05	424.24	424.15	424.02	423.84	423.65	423.43	423.35 -	423.36 +	423.36	423.39	423.30	7
	8 424.06	424.23	424.16	424.02	423.84	423.63	423.42	423.35 -	423.36 +	423.36	423.39	423.29	8
	9 424.06	424.23	424.16	424.01	423.83	423.62	423.41	423.35 -	423.36 +	423.35 -	423.38	423.29	9
	10 424.07	424.23	424.14	423.99	423.82	423.62	423.40	423.35 -	423.36 +	423.35 -	423.38	423.29	10
m ü.M.	11 424.09	424.24	424.14	423.99	423.82	423.61	423.40	423.35 -	423.36 +	423.36	423.38	423.29	11
	12 424.08	424.24	424.18	423.98	423.81	423.61	423.39	423.35 -	423.36 +	423.36	423.37	423.28	12
	13 424.09	424.26	424.16	423.99	423.80	423.60	423.39	423.35 -	423.36 +	423.37	423.37	423.28	13
	14 424.10	424.26	424.10	423.99	423.80	423.59	423.39	423.36 +	423.36 +	423.37	423.37	423.28	14
	15 424.12	424.27 +	424.14	423.97	423.79	423.58	423.38	423.36 +	423.35 +	423.37	423.37	423.28	15
	16 424.13	424.26	424.16	423.96	423.78	423.57	423.38	423.36 +	423.35 -	423.37	423.36	423.27 -	16
	17 424.13	424.23	424.14	423.96	423.78	423.57	423.38	423.36 +	423.35 -	423.37	423.36	423.27 -	17
	18 424.14	424.18	424.11	423.96	423.77	423.57	423.37	423.36 +	423.36 +	423.37	423.36	423.27 -	18
	19 424.14	424.21	424.08	423.96	423.77	423.55	423.37	423.36 +	423.36 +	423.38	423.35	423.27 -	19
	20 424.14	424.23	424.09	423.95	423.76	423.55	423.37	423.36 +	423.36 +	423.38	423.35	423.27 -	20
+ Maximum	21 424.14	424.23	424.08	423.95	423.75	423.54	423.37	423.36 +	423.36 +	423.38	423.35	423.27 -	21
	22 424.17	424.21	424.07	423.95	423.74	423.53	423.36 -	423.36 +	423.36 +	423.38	423.35	423.27 -	22
	23 424.17	424.16 -	424.07	423.93	423.73	423.52	423.36 -	423.36 +	423.36 +	423.38	423.34	423.27 -	23
	24 424.17	424.18	424.08	423.92	423.73	423.52	423.36 -	423.36 +	423.36 +	423.39 +	423.34	423.27 -	24
	25 424.21	424.18	424.12	423.92	423.72	423.51	423.37	423.36 +	423.36 +	423.39 +	423.33	423.27 -	25
	26 424.23 +	424.23	424.10	423.91	423.72	423.50	423.37	423.36 +	423.36 +	423.39 +	423.33	423.27 -	26
	27 424.19	424.23	424.09	423.91	423.71	423.50	423.36 -	423.36 +	423.36 +	423.39 +	423.33	423.27 -	27
	28 424.18	424.24	424.07	423.91	423.70	423.49	423.36 -	423.35 -	423.36 +	423.39 +	423.32 -	423.28	28
	29 424.21	424.06	423.90 -	423.69	423.69	423.48	423.36 -	423.35 -	423.36 +	423.39 +	423.32 -	423.29	29
	30 424.20	424.04	423.90 -	423.69	423.47 -	423.47 -	423.36 -	423.35 -	423.36 +	423.39 +	423.32 -	423.30	30
31 424.18	424.03 -		423.68 -			423.36 -	423.36 +				423.30	31	
Monatsmittel	424.12	424.22 +	424.12	423.97	423.78	423.58	423.39	423.36	423.36	423.37	423.36	423.29 -	m ü.M.
Spitze Datum	424.24 26.	424.28 + 13.	424.24 1.	424.08 2.	423.89 1.	423.69 4.	423.47 1.	423.36 1.	423.36 1.	423.40 25.	423.40 2.	423.32 - 1.	m ü.M.
Amplitude	0.23 +	0.13	0.22	0.19	0.21	0.22	0.11	0.01 -	0.01 -	0.05	0.08	0.05	m
Jahr	Mittel: 423.66 Spitze: 424.28 (13.02.2011) Minimum: 423.27 (15.12.2011) Amplitude: 1.01												



Periode	2009 - 2011 (2 Jahre)												
Monatsmittel	423.77	423.86 +	423.82	423.69	423.55	423.50	423.47 -	423.50	423.55	423.59	423.51	423.50	m ü.M.
Monats-Spitze Jahr	424.24 2011	424.28 + 2011	424.24 2011	424.08 2011	423.89 2011	423.69 2011	423.59 - 2010	423.75 2010	423.80 2010	423.86 2010	423.89 2010	424.01 2010	m ü.M.
Monats-Minimum Jahr	423.26 2010	423.41 2010	423.46 + 2010	423.35 2010	423.30 2010	423.35 2010	423.36 2011	423.35 2011	423.35 2011	423.35 2011	423.24 2009	423.20 - 2009	m ü.M.
Monats-Amplitude Jahr	0.31 + 2010	0.20 2010	0.22 2011	0.19 2011	0.21 2011	0.22 2011	0.11 2011	0.17 2010	0.11 2010	0.08 - 2010	0.09 2009	0.19 2009	m ü.M.
Periode	Mittel: 423.60 Spitze: 424.28 (13.02.2011) Minimum: 423.20 (09.12.2009) Amplitude: 1.08												



Grundwasserstände

Nr. 6224 Hubletzen 4/09 - Cham

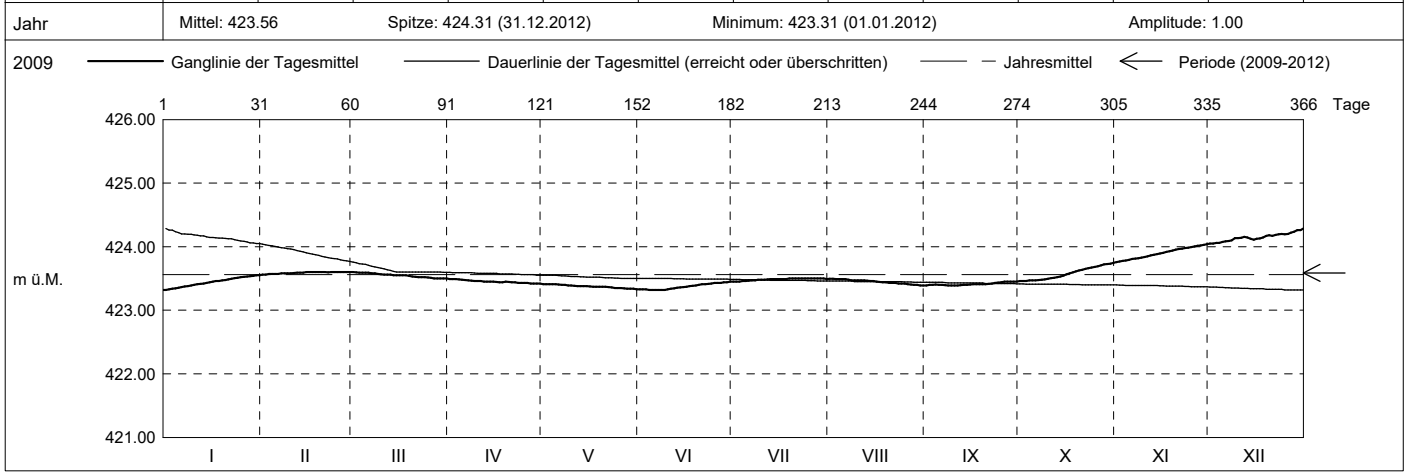
KANTON ZUG

Koordinaten: 2'675'352' / 1'230'219'

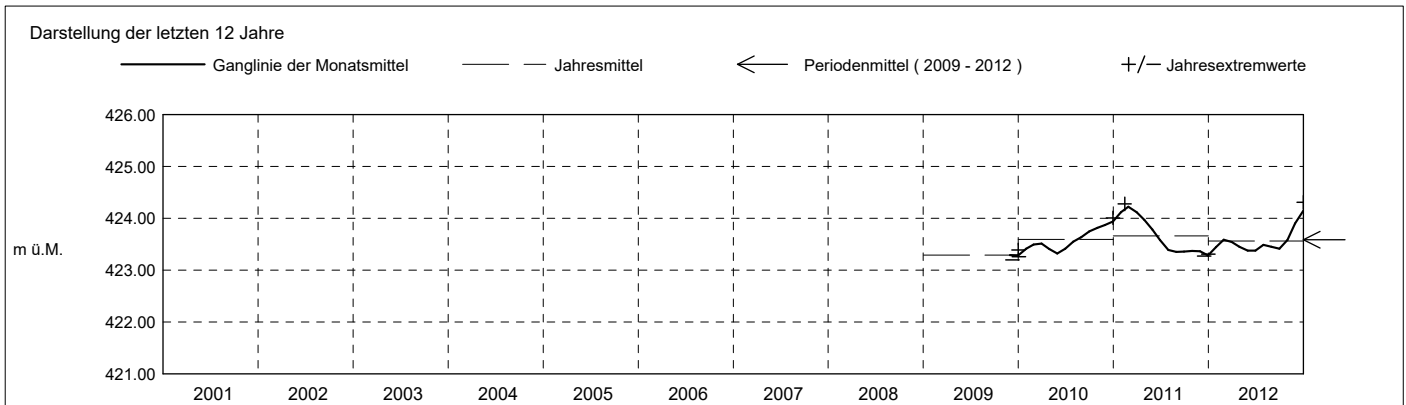
Amt für Umwelt

Abstichpunkt: 439.99 m ü.M. OK Terrain: 440.16 m ü.M.

2012	janvier	février	mars	avril	mai	juin	juillet	août	septembre	octobre	novembre	décembre																																				
Tagesmittel	1 423.32 -	2 423.56 -	3 423.60 +	4 423.49 +	5 423.41 +	6 423.33	7 423.45 -	8 423.50 +	9 423.39 -	10 423.46 -	11 423.76 -	12 424.05 -	13 424.05 -																																			
	2 423.33	3 423.56 -	4 423.60 +	5 423.49 +	6 423.41 +	7 423.33	8 423.45 -	9 423.49	10 423.40	11 423.46 -	12 423.77	13 424.06	14 424.06																																			
	3 423.34	4 423.57	5 423.59	6 423.49 +	7 423.41 +	8 423.33	9 423.45 -	10 423.49	11 423.40	12 423.46 -	13 423.78	14 424.06	15 424.06																																			
	4 423.35	5 423.57	6 423.59	7 423.48	8 423.41 +	9 423.32 -	10 423.46	11 423.49	12 423.40	13 423.47	14 423.78	15 424.06	16 424.07																																			
	5 423.35	6 423.57	7 423.59	8 423.48	9 423.41 +	10 423.32 -	11 423.46	12 423.49	13 423.40	14 423.47	15 423.79	16 424.07	17 424.07																																			
	6 423.36	7 423.57	8 423.59	9 423.47	10 423.40	11 423.32 -	12 423.46	13 423.49	14 423.40	15 423.47	16 423.81	17 424.09	18 424.09																																			
	7 423.38	8 423.58	9 423.58	10 423.47	11 423.40	12 423.32 -	13 423.47	14 423.48	15 423.39 -	16 423.47	17 423.81	18 424.09	19 424.09																																			
	8 423.38	9 423.58	10 423.58	11 423.47	12 423.40	13 423.32 -	14 423.47	15 423.48	16 423.39 -	17 423.48	18 423.82	19 424.10	20 424.10																																			
	9 423.39	10 423.58	11 423.57	12 423.46	13 423.39	14 423.32 -	15 423.48	16 423.47	17 423.39 -	18 423.48	19 423.83	20 424.14	21 424.14																																			
	10 423.40	11 423.58	12 423.57	13 423.46	14 423.39	15 423.33	16 423.48	17 423.47	18 423.39 -	19 423.50	20 423.84	21 424.13	22 424.13																																			
	11 423.41	12 423.59	13 423.56	14 423.46	15 423.38	16 423.34	17 423.48	18 423.47	19 423.39 -	20 423.51	21 423.85	22 424.14	23 424.14																																			
	12 423.41	13 423.59	14 423.56	15 423.45	16 423.38	17 423.35	18 423.48	19 423.47	20 423.40	21 423.51	22 423.86	23 424.16	24 424.16																																			
	13 423.42	14 423.59	15 423.56	16 423.45	17 423.38	18 423.36	19 423.49	20 423.46	21 423.40	22 423.52	23 423.87	24 424.15	25 424.15																																			
	14 423.43	15 423.59	16 423.55	17 423.45	18 423.38	19 423.36	20 423.49	21 423.46	22 423.40	23 423.53	24 423.88	25 424.12	26 424.12																																			
	15 423.44	16 423.60 +	17 423.55	18 423.45	19 423.38	20 423.37	21 423.49	22 423.46	23 423.40	24 423.55	25 423.89	26 424.11	27 424.11																																			
m ü.M.	16 423.45	17 423.60 +	18 423.55	19 423.44	20 423.38	21 423.37	22 423.49	23 423.45	24 423.41	25 423.57	26 423.90	27 424.13	28 424.13																																			
	17 423.46	18 423.60 +	19 423.55	20 423.44	21 423.37	22 423.38	23 423.49	24 423.45	25 423.41	26 423.58	27 423.92	28 424.13	29 424.13																																			
	18 423.46	19 423.60 +	20 423.55	21 423.44	22 423.37	23 423.39	24 423.49	25 423.44	26 423.41	27 423.60	28 423.93	29 424.14	30 424.14																																			
	19 423.47	20 423.60 +	21 423.54	22 423.45	23 423.37	24 423.39	25 423.50 +	26 423.44	27 423.41	28 423.61	29 423.94	30 424.17	31 424.17																																			
	20 423.48	21 423.60 +	22 423.53	23 423.45	24 423.37	25 423.40	26 423.50 +	27 423.43	28 423.41	29 423.63	30 423.95	31 424.18	32 424.18																																			
	21 423.49	22 423.60 +	23 423.52	24 423.44	25 423.37	26 423.41	27 423.50 +	28 423.43	29 423.41	30 423.64	31 423.96	32 424.17	33 424.17																																			
	22 423.50	23 423.60 +	24 423.52	25 423.44	26 423.36	27 423.41	28 423.50 +	29 423.43	30 423.42	31 423.65	32 423.97	33 424.19	34 424.19																																			
	23 423.50	24 423.60 +	25 423.52	26 423.43	27 423.36	28 423.42	29 423.50 +	30 423.42	31 423.43	32 423.66	33 423.98	34 424.19	35 424.19																																			
	24 423.51	25 423.60 +	26 423.52	27 423.43	28 423.35	29 423.42	30 423.50 +	31 423.42	32 423.44	33 423.67	34 423.99	35 424.20	36 424.20																																			
	25 423.52	26 423.60 +	27 423.51	28 423.43	29 423.35	30 423.43	31 423.50 +	32 423.42	33 423.44	34 423.68	35 423.99	36 424.20	37 424.20																																			
+ Maximum	26 423.52	27 423.60 +	28 423.51	29 423.43	30 423.35	31 423.43	32 423.50 +	33 423.41	34 423.45 +	35 423.69	36 424.00	37 424.20	38 424.20																																			
	27 423.53	28 423.60 +	29 423.50 -	30 423.42 -	31 423.34	32 423.43	33 423.50 +	34 423.40	35 423.45 +	36 423.71	37 424.01	38 424.22	39 424.22																																			
- Minimum	28 423.54	29 423.60 +	30 423.50 -	31 423.42 -	32 423.34	33 423.44	34 423.50 +	35 423.40	36 423.45 +	37 423.72	38 424.02	39 424.24	40 424.24																																			
	29 423.54	30 423.60 +	31 423.50 -	32 423.42 -	33 423.34	34 423.44	35 423.50 +	36 423.40	37 423.45 +	38 423.73	39 424.03	40 424.26	41 424.26																																			
	30 423.55 +	31 423.50 -	32 423.42 -	33 423.34	34 423.45 +	35 423.50 +	36 423.39 -	37 423.45 +	38 423.73	39 424.04 +	40 424.26	41 424.26	42 424.26																																			
	31 423.55 +	32 423.50 -	33 423.42 -	34 423.33 -	35 423.45 +	36 423.49	37 423.39 -	38 423.45 +	39 423.75 +	40 424.29 +	41 424.29 +	42 424.29 +	43 424.29 +																																			
Monatsmittel	423.44	423.59	423.55	423.45	423.38	423.37 -	423.48	423.45	423.41	423.58	423.90	424.15 +	m ü.M.																																			
Spitze Datum	423.56 31.	423.60 14.	423.60 1.	423.49 1.	423.42 - 1.	423.45 29.	423.50 19.	423.50 1.	423.46 30.	423.75 31.	424.05 30.	424.31 + 31.	m ü.M.																																			
Amplitude	0.25	0.04 -	0.11	0.07	0.09	0.13	0.05	0.11	0.07	0.29	0.30 +	0.26	m																																			
Jahr	Mittel: 423.56												Spitze: 424.31 (31.12.2012)												Minimum: 423.31 (01.01.2012)												Amplitude: 1.00											



Periode	2009 - 2012 (3 Jahre)																																															
Monatsmittel	423.66	423.77 +	423.73	423.61	423.49	423.46 -	423.48	423.48	423.51	423.59	423.61	423.67	m ü.M.																																			
Monats-Spitze Jahr	424.24 2011	424.28 2011	424.24 2011	424.08 2011	423.89 2011	423.69 2011	423.59 - 2010	423.75 2010	423.80 2010	423.86 2010	424.05 2012	424.31 + 2013	m ü.M.																																			
Monats-Minimum Jahr	423.26 2010	423.41 2010	423.46 + 2010	423.35 2010	423.30 2010	423.32 2012	423.36 2011	423.35 2011	423.35 2011	423.35 2011	423.24 2009	423.20 - 2009	m ü.M.																																			
Monats-Amplitude Jahr	0.31 + 2010	0.20 2010	0.22 2011	0.19 2011	0.21 2011	0.22 2011	0.11 - 2011	0.17 2010	0.11 - 2010	0.29 2012	0.30 2012	0.26 2013	m ü.M.																																			
Periode	Mittel: 423.59												Spitze: 424.31 (31.12.2012)												Minimum: 423.20 (09.12.2009)												Amplitude: 1.11											



Grundwasserstände

Nr. 6224 Hubletzen 4/09 - Cham

KANTON ZUG

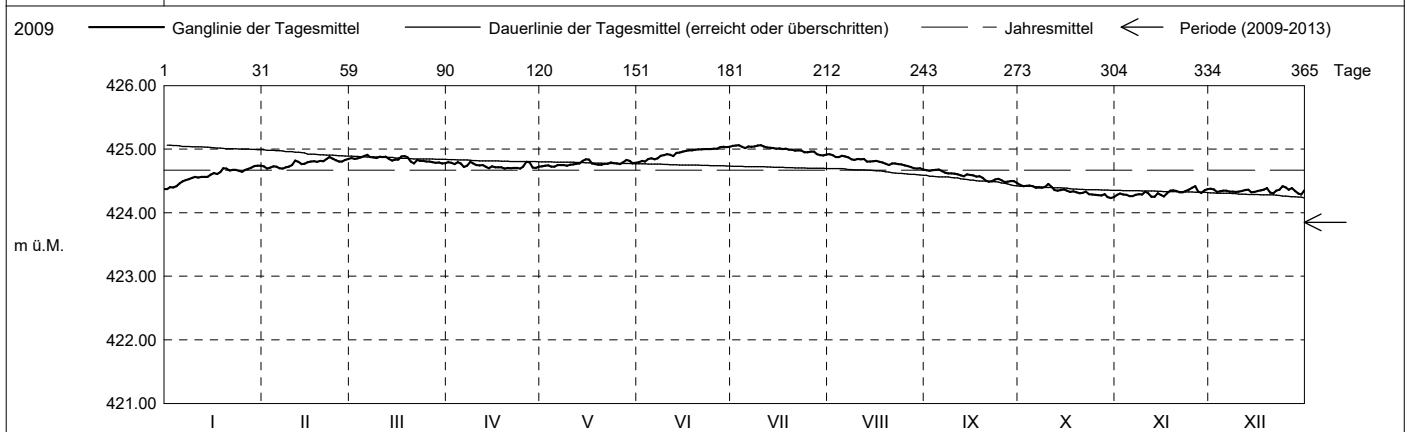
Koordinaten: 2'675'352' / 1'230'219'

Amt für Umwelt

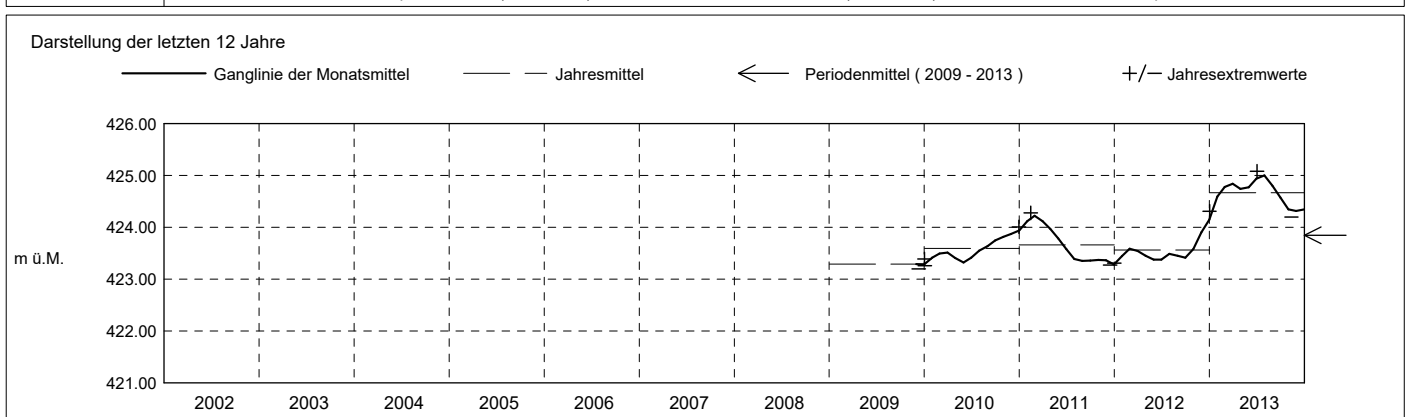
Abstichpunkt: 439.99 m ü.M. OK Terrain: 440.16 m ü.M.

2013	janvier	février	mars	avril	mai	juin	juillet	août	septembre	octobre	novembre	décembre	
Tagesmittel	1 424.37 -	424.73	424.86	424.79	424.73	424.80 -	425.05	424.92 +	424.67	424.44	424.28	424.38	1
	2 424.40	424.69 -	424.85	424.79	424.74	424.81	425.06 +	424.91	424.66	424.42	424.30	424.37	2
	3 424.40	424.71	424.86	424.76	424.75	424.80 -	425.06 +	424.88	424.67	424.42	424.29	424.33	3
	4 424.42	424.73	424.87	424.79	424.72 -	424.84	425.04	424.88	424.67	424.43	424.28	424.33	4
	5 424.46	424.73	424.89	424.78	424.73	424.86	425.02	424.89	424.68 +	424.42	424.26	424.35	5
	6 424.49	424.70	424.91 +	424.72	424.75	424.84	425.04	424.89	424.65	424.39	424.26	424.35	6
	7 424.51	424.70	424.88	424.74	424.75	424.85	425.04	424.87	424.63	424.40	424.28	424.33	7
	8 424.53	424.71	424.87	424.80 +	424.75	424.89	425.04	424.84	424.62	424.39	424.29	424.33	8
	9 424.55	424.72	424.86	424.77	424.74	424.90	425.06 +	424.83	424.62	424.41	424.29	424.33	9
	10 424.56	424.75	424.88	424.75	424.76	424.92	425.06 +	424.84	424.62	424.45 +	424.33	424.33	10
m ü.M.	11 424.55	424.82	424.88	424.74	424.76	424.91	425.04	424.84	424.60	424.41	424.30	424.34	11
	12 424.56	424.80	424.88	424.75	424.77	424.89	425.03	424.84	424.59	424.36	424.25 -	424.35	12
	13 424.56	424.77	424.85	424.73	424.77	424.94	425.02	424.81	424.58	424.35	424.25 -	424.36	13
	14 424.56	424.77	424.82	424.70	424.81	424.95	425.02	424.80	424.60	424.36	424.30	424.32	14
	15 424.60	424.80	424.83	424.73	424.84 +	424.96	425.01	424.81	424.59	424.37	424.28	424.33	15
	16 424.63	424.81	424.83	424.71	424.83	424.97	425.01	424.81	424.59	424.35	424.26	424.34	16
	17 424.61	424.81	424.89	424.72	424.77	424.98	425.00	424.80	424.57	424.33	424.30	424.35	17
	18 424.64	424.80	424.89	424.72	424.77	424.98	425.00	424.79	424.57	424.33	424.35	424.36	18
	19 424.70	424.81	424.87	424.69 -	424.75	424.99	424.99	424.77	424.55	424.32	424.35	424.39	19
	20 424.69	424.81	424.81	424.70	424.76	424.99	424.99	424.75	424.50	424.30	424.34	424.32	20
+ Maximum	21 424.66	424.84	424.77 -	424.70	424.77	425.00	424.98	424.78	424.49	424.31	424.32	424.31	21
	22 424.67	424.88 +	424.83	424.71	424.77	425.00	424.98	424.78	424.50	424.33	424.32	424.35	22
	23 424.67	424.85	424.82	424.71	424.79	425.00	424.97	424.76	424.52	424.29	424.34	424.36	23
	24 424.66	424.82	424.82	424.69 -	424.78	425.00	424.95	424.76	424.53	424.29	424.36	424.42 +	24
	25 424.65	424.80	424.80	424.73	424.77	425.01	424.95	424.75	424.51	424.28	424.39	424.40	25
	26 424.67	424.80	424.80	424.80 +	424.76	425.01	424.96	424.74	424.48	424.27	424.42 +	424.36	26
	27 424.69	424.83	424.79	424.80 +	424.79	425.03	424.96	424.72	424.49	424.27	424.33	424.39	27
	28 424.71	424.85	424.79	424.71	424.83	425.04 +	424.92	424.70	424.50	424.29	424.31	424.34	28
	29 424.73	424.79	424.79	424.71	424.82	425.03	424.91	424.70	424.50	424.24	424.35	424.30	29
	30 424.74 +	424.78	424.78	424.73	424.78	425.04 +	424.90 -	424.70	424.47 -	424.23 -	424.37	424.29 -	30
31 424.74 +	424.78	424.78	424.73	424.78	424.92	424.92	424.68 -	424.47 -	424.24	424.35	424.35	31	
Monatsmittel	424.59	424.78	424.84	424.74	424.77	424.94	425.00 +	424.80	424.57	424.34	424.31 -	424.35	m ü.M.
Spitze Datum	424.74 29.	424.89 22.	424.92 6.	424.83 26.	424.86 14.	425.04 27.	425.08 + 2.	424.93 1.	424.69 4.	424.46 10.	424.42 - 26.	424.44 24.	m ü.M.
Amplitude	0.43 +	0.20	0.16	0.15 -	0.16	0.26	0.19	0.26	0.25	0.24	0.22	0.20	m

Jahr Mittel: 424.67 Spitze: 425.08 (02.07.2013) Minimum: 424.20 (11.11.2013) Amplitude: 0.88



Periode	2009 - 2013 (4 Jahre)												
Monatsmittel	423.89	424.02 +	424.01	423.89	423.81	423.83	423.86	423.81	423.77	423.78	423.75 -	423.80	m ü.M.
Monats-Spitze Jahr	424.74 2013	424.89 2013	424.92 2013	424.83 2013	424.86 2013	425.04 2013	425.08 + 2013	424.93 2013	424.69 2013	424.46 2013	424.42 - 2013	424.44 2013	m ü.M.
Monats-Minimum Jahr	423.26 2010	423.41 2010	423.46 + 2010	423.35 2010	423.30 2010	423.32 2012	423.36 2011	423.35 2011	423.35 2011	423.35 2011	423.24 2009	423.20 - 2009	m ü.M.
Monats-Amplitude Jahr	0.43 + 2013	0.20 2010	0.22 2011	0.19 - 2011	0.21 2011	0.26 2013	0.19 - 2013	0.26 2013	0.25 2013	0.29 2012	0.30 2012	0.26 2013	m ü.M.
Periode	Mittel: 423.85 Spitze: 425.08 (02.07.2013) Minimum: 423.20 (09.12.2009) Amplitude: 1.88												



Grundwasserstände

Nr. 6224 Hubletzen 4/09 - Cham

KANTON ZUG

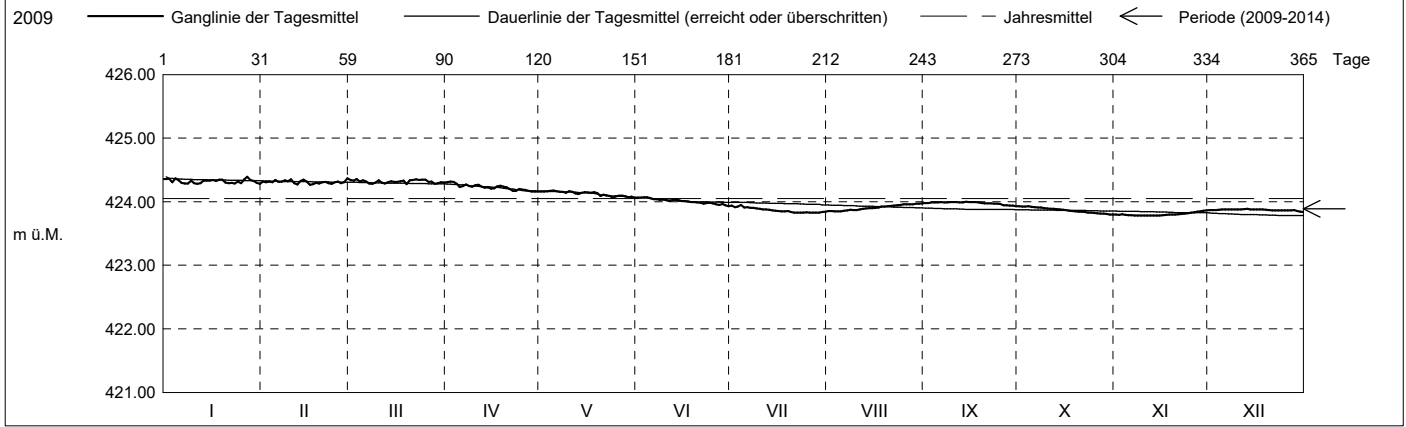
Koordinaten: 2'675'352' / 1'230'219'

Amt für Umwelt

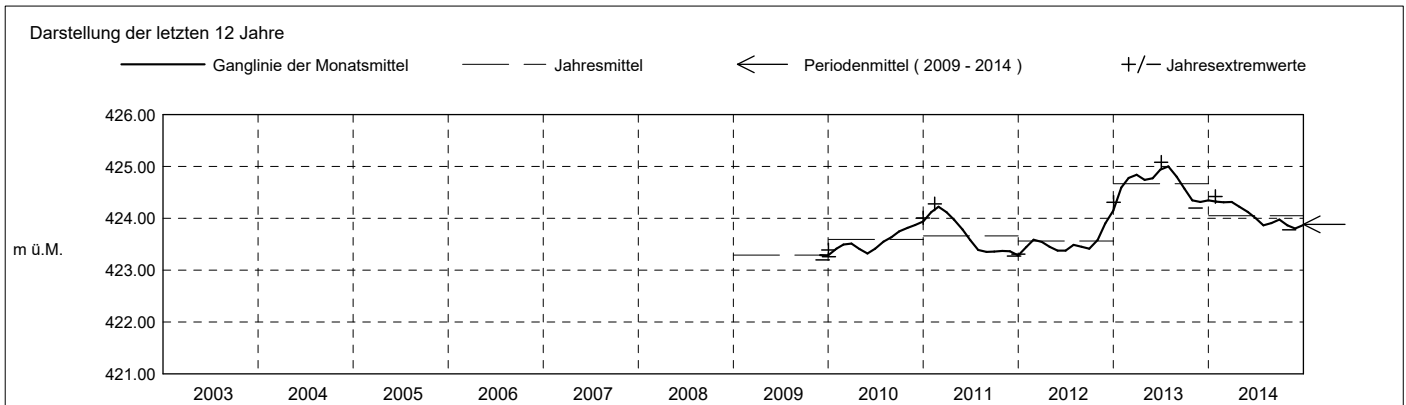
Abstichpunkt: 439.99 m ü.M. OK Terrain: 440.16 m ü.M.

2014	janvier	février	mars	avril	mai	juin	juillet	août	septembre	octobre	novembre	décembre	
Tagesmittel	1 424.36	424.32	424.34	424.31	424.16	424.07 +	423.94	423.85 -	423.98	423.93 +	423.80	423.87	1
	2 424.36	424.30	424.33	424.32 +	424.16	424.06	423.92	423.85 -	423.98	423.92	423.79	423.87	2
	3 424.31	424.31	424.36 +	424.31	424.17 +	424.07 +	423.92	423.85 -	423.99	423.92	423.80	423.87	3
	4 424.37	424.30	424.32	424.28	424.17 +	424.07 +	423.95 +	423.85 -	423.99	423.93 +	423.80	423.87	4
	5 424.34	424.34	424.34	424.23	424.17 +	424.06	423.91	423.85 -	423.99	423.92	423.79	423.88	5
	6 424.29	424.31	424.32	424.24	424.16	424.04	423.91	423.86	423.99	423.91	423.79	423.88	6
	7 424.29	424.32	424.29	424.27	424.15	424.04	423.90	423.86	423.99	423.91	423.78 -	423.88	7
	8 424.29	424.34	424.28	424.25	424.15	424.03	423.90	423.87	423.99	423.91	423.78 -	423.88	8
	9 424.33	424.32	424.30	424.23	424.14	424.04	423.90	423.87	423.99	423.90	423.78 -	423.88	9
	10 424.29	424.35	424.34	424.26	424.16	424.03	423.89	423.87	423.99	423.89	423.78 -	423.88	10
m ü.M.	11 424.28 -	424.29	424.30	424.26	424.15	424.01	423.88	423.88	423.99	423.89	423.78 -	423.88	11
	12 424.29	424.27 -	424.29	424.24	424.13	424.02	423.88	423.89	423.99	423.89	423.78 -	423.88	12
	13 424.33	424.37	424.31	424.22	424.12	424.03	423.87	423.90	423.99	423.88	423.78 -	423.89 +	13
	14 424.33	424.35	424.32	424.23	424.14	424.02	423.86	423.90	424.00 +	423.88	423.78 -	423.88	14
	15 424.33	424.31	424.31	424.21	424.15	424.01	423.86	423.90	423.99	423.87	423.78 -	423.88	15
	16 424.34	424.27 -	424.31	424.21	424.15	424.01	423.85	423.91	423.99	423.87	423.79	423.88	16
	17 424.33	424.27 -	424.32	424.24	424.14	424.00	423.85	423.91	423.99	423.86	423.79	423.88	17
	18 424.35	424.29	424.33	424.25	424.15	423.99	423.85	423.92	423.99	423.85	423.80	423.88	18
	19 424.35	424.29	424.27 -	424.24	424.13	423.99	423.85	423.92	423.98	423.85	423.80	423.87	19
	20 424.30	424.31	424.34	424.23	424.09	423.99	423.84	423.93	423.98	423.85	423.80	423.87	20
+ Maximum	21 424.29	424.31	424.34	424.20	424.11	423.99	423.83 -	423.93	423.98	423.84	423.80	423.86	21
	22 424.30	424.29	424.35	424.17	424.10	423.97	423.83 -	423.94	423.97	423.81	423.86	423.86	22
	23 424.29	424.28	424.34	424.17	424.09	423.98	423.83 -	423.94	423.97	423.83	423.81	423.86	23
	24 424.32	424.31	424.35	424.20	424.06 -	423.98	423.83 -	423.95	423.97	423.83	423.82	423.86	24
	25 424.29	424.31	424.35	424.19	424.09	423.97	423.83 -	423.96	423.96	423.82	423.83	423.86	25
	26 424.35	424.29	424.31	424.18	424.10	423.96	423.83 -	423.96	423.95	423.82	423.83	423.86	26
	27 424.39 +	424.30	424.31	424.17	424.09	423.95	423.83 -	423.96	423.94	423.81	423.84	423.86	27
	28 424.34	424.36 +	424.28	424.16 -	424.09	423.96	423.83 -	423.96	423.94	423.82	423.85	423.87	28
	29 424.33	424.29	424.29	424.16 -	424.07	423.94	423.83 -	423.97	423.94	423.81	423.86 +	423.86	29
	30 424.29	424.30	424.30	424.16 -	424.08	423.93 -	423.84	423.97	423.93 -	423.80 -	423.86 +	423.84 -	30
31 424.28 -	424.30	424.30	424.06 -	424.06 -	423.93 -	423.84	423.98 +	423.93 -	423.80 -	423.84 -	423.84 -	31	
Monatsmittel	424.32 +	424.31	424.32 +	424.23	424.13	424.01	423.87	423.91	423.98	423.87	423.80 -	423.87	m ü.M.
Spitze Datum	424.42 + 26.	424.42 + 28.	424.37 3.	424.33 2.	424.19 5.	424.08 1.	423.97 4.	423.98 31.	424.00 5.	423.93 1.	423.86 - 29.	423.89 12.	m ü.M.
Amplitude	0.17	0.19 +	0.12	0.19 +	0.14	0.16	0.15	0.14	0.07	0.14	0.08	0.05 -	m

Jahr Mittel: 424.05 Spitze: 424.42 (26.01.2014) Minimum: 423.78 (06.11.2014) Amplitude: 0.64



Periode	2009 - 2014 (5 Jahre)												
Monatsmittel	423.98	424.08 +	424.07	423.96	423.88	423.86	423.86	423.83	423.81	423.80	423.76 -	423.81	m ü.M.
Monats-Spitze Jahr	424.74 2013	424.89 2013	424.92 2013	424.83 2013	424.86 2013	425.04 2013	425.08 + 2013	424.93 2013	424.69 2013	424.46 2013	424.42 - 2013	424.44 2013	m ü.M.
Monats-Minimum Jahr	423.26 2010	423.41 2010	423.46 + 2010	423.35 2010	423.30 2010	423.32 2012	423.36 2011	423.35 2011	423.35 2011	423.35 2011	423.24 2009	423.20 - 2009	m ü.M.
Monats-Amplitude Jahr	0.43 + 2013	0.20 2010	0.22 2011	0.19 - 2011	0.21 2011	0.26 2013	0.19 - 2013	0.26 2013	0.25 2013	0.29 2012	0.30 2012	0.26 2013	m ü.M.
Periode	Mittel: 423.89 Spitze: 425.08 (02.07.2013) Minimum: 423.20 (09.12.2009) Amplitude: 1.88												



Grundwasserstände

Nr. 6224 Hubletzen 4/09 - Cham

KANTON ZUG

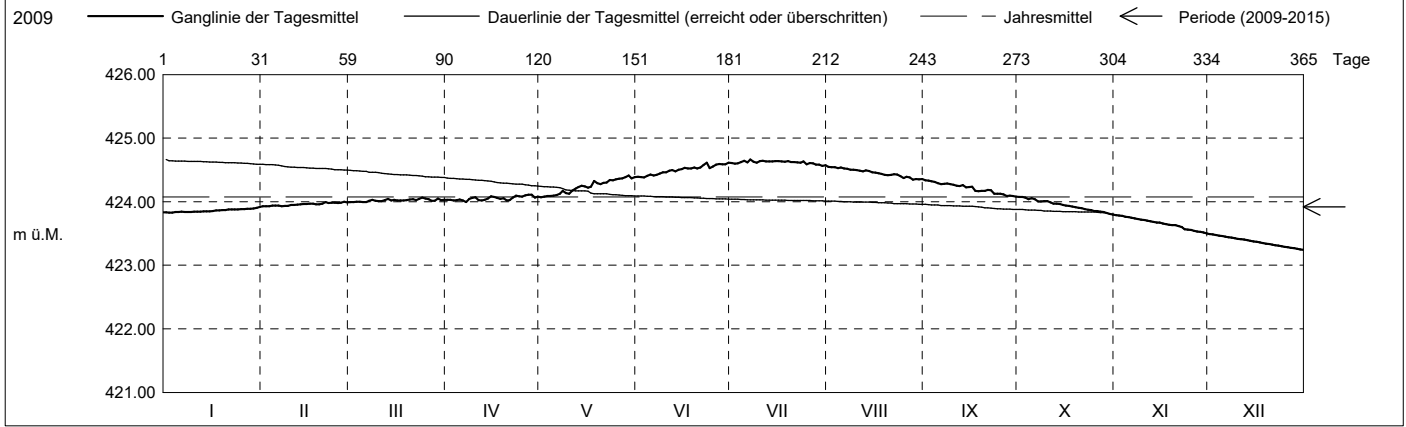
Koordinaten: 2'675'352' / 1'230'219'

Amt für Umwelt

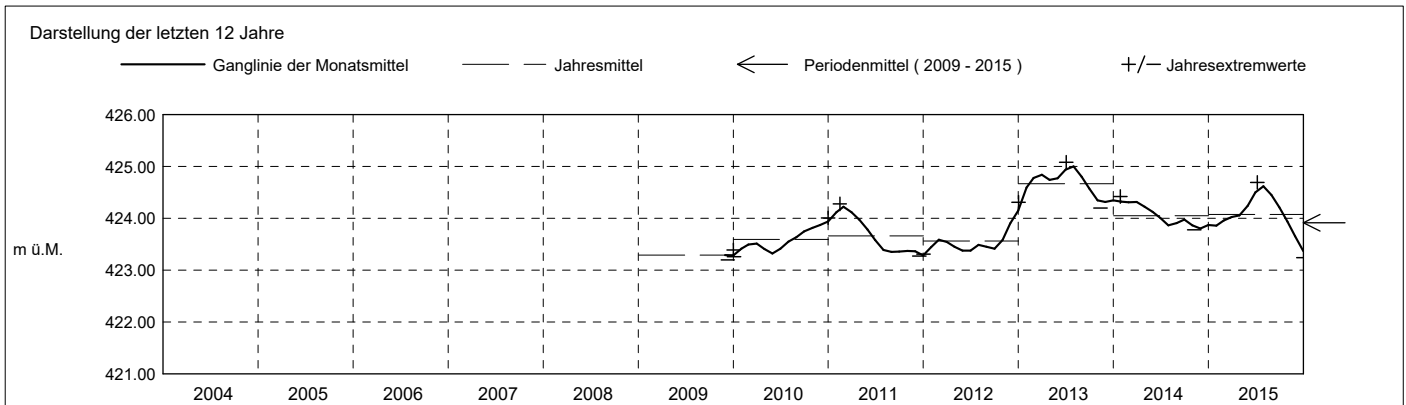
Abstichpunkt: 439.99 m ü.M. OK Terrain: 440.16 m ü.M.

2015	janvier	février	mars	avril	mai	juin	juillet	août	septembre	octobre	novembre	décembre	
Tagesmittel	1 423.83 -	423.93 -	423.99 -	424.03	424.07 -	424.39	424.61	424.55 +	424.33 +	424.07	423.79 +	423.49 +	1
	2 423.83 -	423.93 -	423.99 -	424.03	424.08	424.39	424.60	424.54	424.33 +	424.08 +	423.78	423.49 +	2
	3 423.83 -	423.93 -	424.00	424.02	424.09	424.38 -	424.61	424.54	424.32	424.06	423.78	423.48	3
	4 423.84	423.94	424.00	424.02	424.09	424.41	424.63	424.53	424.31	424.04	423.77	423.47	4
	5 423.84	423.94	423.99 -	424.04	424.09	424.43	424.64	424.54	424.29	424.05	423.76	423.46	5
	6 423.84	423.94	424.00	424.02	424.10	424.41	424.62	424.52	424.28	424.04	423.75	423.45	6
	7 423.84	423.93 -	424.02	424.00 -	424.13	424.42	424.66 +	424.52	424.28	424.00	423.73	423.44	7
	8 423.84	423.93 -	424.03	424.04	424.17	424.44	424.63	424.50	424.28	424.00	423.73	423.43	8
	9 423.84	423.94	424.02	424.06	424.13	424.46	424.61	424.50	424.28	424.01	423.72	423.42	9
	10 423.84	423.95	424.01	424.07	424.13	424.46	424.64	424.50	424.26	424.01	423.71	423.42	10
	11 423.84	423.95	424.01	424.02	424.18	424.49	424.64	424.49	424.25	423.99	423.70	423.41	11
	12 423.84	423.95	424.02	424.02	424.20	424.50	424.64	424.48	424.25	423.97	423.69	423.40	12
m ü.M.	13 423.85	423.96	424.04	424.03	424.23	424.48	424.64	424.49	424.26	423.97	423.68	423.40	13
	14 423.85	423.96	424.02	424.05	424.25	424.50	424.64	424.48	424.23	423.97	423.67	423.39	14
	15 423.85	423.96	424.03	424.09	424.24	424.51	424.64	424.46	424.23	423.95	423.67	423.38	15
	16 423.85	423.97	424.02	424.07	424.22	424.53	424.64	424.46	424.24	423.94	423.66	423.37	16
	17 423.86	423.97	424.02	424.06	424.24	424.52	424.63	424.45	424.17	423.93	423.65	423.36	17
	18 423.86	423.96	424.02	424.05	424.33	424.52	424.63	424.44	424.17	423.92	423.64	423.35	18
	19 423.87	423.96	424.03	424.05	424.29	424.54	424.64	424.42	424.17	423.91	423.63	423.34	19
	20 423.87	423.97	424.04	424.02	424.27	424.52	424.62	424.42	424.17	423.90	423.63	423.33	20
	21 423.88	423.99	424.04	424.02	424.30	424.54	424.62	424.42	424.19	423.90	423.62	423.32	21
	22 423.88	423.98	424.03	424.07	424.30	424.58	424.62	424.43	424.18	423.88	423.60	423.31	22
	23 423.88	423.98	424.04	424.09	424.34	424.61 +	424.61	424.42	424.13	423.87	423.57	423.31	23
	24 423.88	423.98	424.07 +	424.08	424.34	424.53	424.63	424.40	424.12	423.87	423.56	423.30	24
+ Maximum	25 423.88	423.98	424.05	424.08	424.35	424.55	424.59	424.37	424.13	423.85	423.56	423.29	25
	26 423.88	423.99	424.04	424.10	424.36	424.58	424.61	424.39	424.12	423.85	423.54	423.28	26
- Minimum	27 423.89	424.00 +	424.02	424.11 +	424.37	424.59	424.60	424.38	424.09	423.84	423.53	423.27	27
	28 423.89	423.99	424.01	424.11 +	424.39	424.59	424.58	424.35 -	424.09	423.84	423.52	423.27	28
	29 423.89	423.99	424.05	424.06	424.41 +	424.59	424.58	424.36	424.09	423.82	423.51	423.26	29
	30 423.91	424.02	424.08	424.37	424.61 +	424.56 -	424.35 -	424.08 -	423.81	423.50 -	423.25	423.25	30
	31 423.92 +	424.03	424.03	424.39	424.61 +	424.57 -	424.36	424.08 -	423.80 -	423.49 -	423.24 -	423.24 -	31
Monatsmittel	423.86	423.96	424.02	424.05	424.24	424.50	424.62 +	424.45	424.21	423.94	423.65	423.37 -	m ü.M.
Spitze Datum	423.92 31.	424.03 27.	424.08 24.	424.13 26.	424.43 29.	424.63 30.	424.69 + 7.	424.57 1.	424.36 1.	424.10 2.	423.79 1.	423.50 - 1.	m ü.M.
Amplitude	0.09 -	0.11	0.11	0.15	0.36 +	0.26	0.14	0.23	0.29	0.31	0.29	0.26	m

Jahr Mittel: 424.07 Spitze: 424.69 (07.07.2015) Minimum: 423.24 (31.12.2015) Amplitude: 1.45



Periode	2009 - 2015 (6 Jahre)												
Monatsmittel	423.96	424.06 +	424.06 +	423.97	423.94	423.97	423.99	423.93	423.88	423.82	423.74 -	423.75	m ü.M.
Monats-Spitze Jahr	424.74 2013	424.89 2013	424.92 2013	424.83 2013	424.86 2013	425.04 2013	425.08 + 2013	424.93 2013	424.69 2013	424.46 2013	424.42 - 2013	424.44 2013	m ü.M.
Monats-Minimum Jahr	423.26 2010	423.41 2010	423.46 + 2010	423.35 2010	423.30 2010	423.32 2012	423.36 2011	423.35 2011	423.35 2011	423.35 2011	423.24 2009	423.20 - 2009	m ü.M.
Monats-Amplitude Jahr	0.43 + 2013	0.20 2010	0.22 2011	0.19 - 2011	0.36 2015	0.26 2013	0.19 - 2013	0.26 2013	0.29 2015	0.31 2015	0.30 2012	0.26 2013	m ü.M.
Periode	Mittel: 423.92 Spitze: 425.08 (02.07.2013) Minimum: 423.20 (09.12.2009) Amplitude: 1.88												



Grundwasserstände

Nr. 6224 Hubletzen 4/09 - Cham

KANTON ZUG

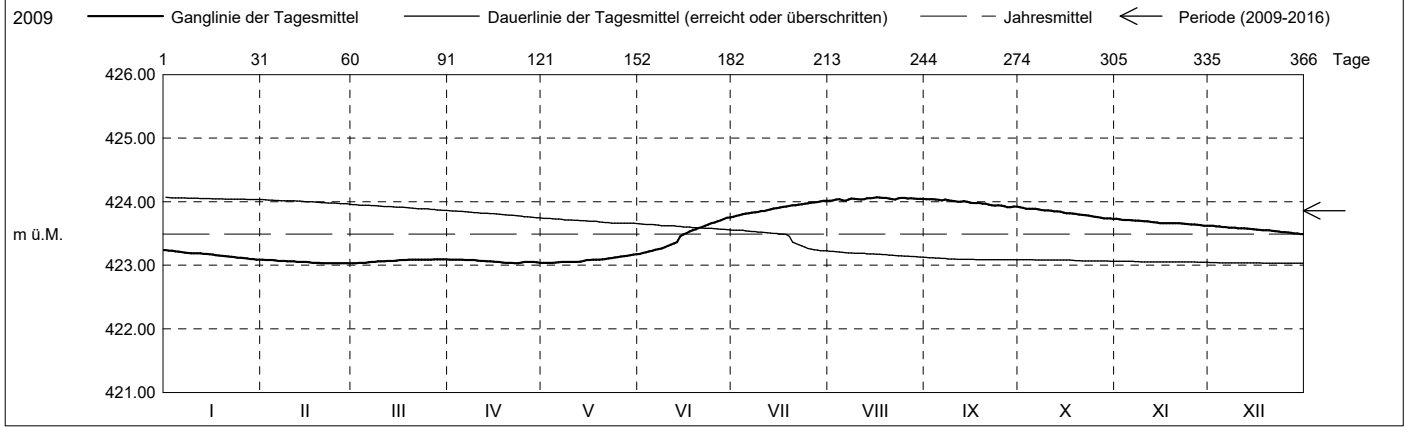
Koordinaten: 2'675'352' / 1'230'219'

Amt für Umwelt

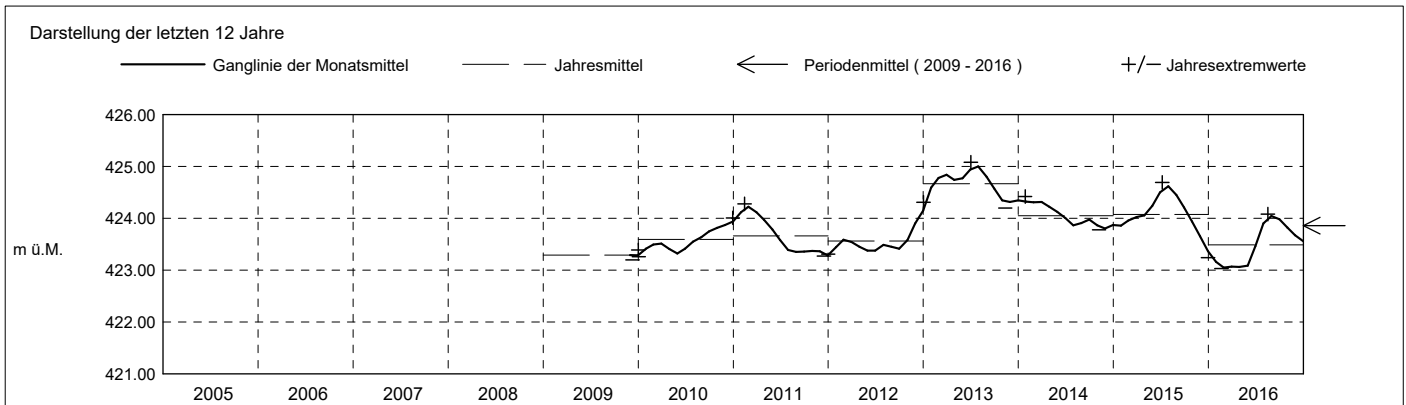
Abstichpunkt: 439.99 m ü.M. OK Terrain: 440.16 m ü.M.

2016	janvier	février	mars	avril	mai	juin	juillet	août	septembre	octobre	novembre	décembre	
Tagesmittel	1 423.24 +	423.09 +	423.03 -	423.09 +	423.04 -	423.18 -	423.77 -	424.01 -	424.04 +	423.91 +	423.73 +	423.62 +	1
	2 423.23	423.08	423.03 -	423.09 +	423.04 -	423.19	423.78	424.02	424.04 +	423.90	423.72	423.62 +	2
	3 423.23	423.08	423.04	423.09 +	423.04 -	423.20	423.79	424.03	424.04 +	423.89	423.71	423.61	3
	4 423.22	423.08	423.04	423.09 +	423.04 -	423.22	423.80	424.04	424.04 +	423.89	423.71	423.61	4
	5 423.21	423.08	423.04	423.09 +	423.04 -	423.23	423.81	424.02	424.03	423.89	423.71	423.60	5
	6 423.21	423.07	423.05	423.08	423.05	423.24	423.82	424.02	424.02	423.89	423.71	423.60	6
	7 423.20	423.07	423.05	423.08	423.05	423.25	423.83	424.03	424.04 +	423.88	423.70	423.59	7
	8 423.19	423.07	423.05	423.08	423.05	423.27	423.83	424.05	424.02	423.87	423.70	423.59	8
	9 423.19	423.06	423.06	423.08	423.05	423.29	423.84	424.04	424.01	423.86	423.70	423.59	9
	10 423.19	423.06	423.06	423.07	423.05	423.31	423.85	424.04	424.01	423.86	423.69	423.58	10
m ü.M.	11 423.19	423.06	423.06	423.07	423.05	423.33	423.86	424.03	424.00	423.86	423.69	423.58	11
	12 423.19	423.05	423.07	423.07	423.05	423.35	423.87	424.04	424.00	423.85	423.68	423.58	12
	13 423.18	423.05	423.07	423.06	423.06	423.36	423.88	424.05	424.01	423.85	423.68	423.57	13
	14 423.18	423.05	423.07	423.06	423.07	423.45	423.89	424.06	424.00	423.84	423.67	423.57	14
	15 423.17	423.05	423.07	423.06	423.08	423.49	423.90	424.06	423.98	423.83	423.66	423.57	15
	16 423.17	423.05	423.08	423.05	423.08	423.51	423.91	424.07 +	423.98	423.82	423.66	423.56	16
	17 423.16	423.04	423.08	423.05	423.09	423.53	423.92	424.07 +	423.98	423.82	423.66	423.55	17
	18 423.16	423.04	423.08	423.04	423.09	423.55	423.92	424.06	423.98	423.81	423.66	423.55	18
	19 423.15	423.04	423.09	423.04	423.09	423.57	423.93	424.06	423.97	423.81	423.66	423.55	19
	20 423.14	423.03 -	423.09	423.04	423.09	423.58	423.95	424.05	423.97	423.80	423.66	423.55	20
+ Maximum	21 423.14	423.03 -	423.09	423.04	423.10	423.60	423.95	424.04	423.95	423.79	423.66	423.54	21
	22 423.13	423.03 -	423.09	423.03 -	423.11	423.62	423.95	424.03	423.95	423.79	423.66	423.54	22
	23 423.13	423.03 -	423.09	423.03 -	423.11	423.64	423.96	424.05	423.94	423.78	423.65	423.53	23
	24 423.12	423.03 -	423.09	423.04	423.12	423.66	423.97	424.06	423.94	423.77	423.65	423.52	24
	25 423.12	423.03 -	423.09	423.05	423.13	423.67	423.98	424.06	423.94	423.76	423.64	423.52	25
	26 423.11	423.03 -	423.09	423.05	423.14	423.69	423.98	424.05	423.93	423.76	423.64	423.51	26
	27 423.11	423.03 -	423.09	423.05	423.14	423.71	423.99	424.05	423.92 -	423.75	423.63	423.51	27
	28 423.10	423.03 -	423.09	423.05	423.15	423.73	424.00	424.05	423.92 -	423.74	423.63	423.50	28
	29 423.10	423.03 -	423.10 +	423.05	423.16	423.74	424.01 +	424.04	423.93	423.74	423.62 -	423.50	29
	30 423.09 -	423.03 -	423.09	423.04	423.17 +	423.75 +	424.01 +	424.04	423.92 -	423.74	423.62 -	423.49 -	30
31 423.09 -	423.03 -	423.09	423.04	423.17 +	423.75 +	424.01 +	424.04	423.92 -	423.73 -	423.62 -	423.49 -	31	
Monatsmittel	423.16	423.05 -	423.07	423.06	423.09	423.46	423.90	424.04 +	423.98	423.82	423.67	423.56	m ü.M.
Spitze Datum	423.24 1.	423.09 - 1.	423.10 27.	423.09 - 1.	423.18 31.	423.76 30.	424.02 30.	424.08 + 16.	424.05 2.	423.92 1.	423.73 1.	423.62 1.	m ü.M.
Amplitude	0.15	0.06 -	0.07	0.06 -	0.14	0.58 +	0.26	0.07	0.14	0.20	0.11	0.13	m

Jahr Mittel: 423.49 Spitze: 424.08 (16.08.2016) Minimum: 423.03 (20.02.2016) Amplitude: 1.05



Periode	2009 - 2016 (7 Jahre)												
Monatsmittel	423.84	423.92	423.92	423.84	423.82	423.90	423.97 +	423.95	423.89	423.82	423.73 -	423.73 -	m ü.M.
Monats-Spitze Jahr	424.74 2013	424.89 2013	424.92 2013	424.83 2013	424.86 2013	425.04 2013	425.08 + 2013	424.93 2013	424.69 2013	424.46 2013	424.42 - 2013	424.44 2013	m ü.M.
Monats-Minimum Jahr	423.09 2016	423.03 - 2016	423.03 - 2016	423.03 - 2016	423.04 2016	423.18 2016	423.36 + 2011	423.35 2011	423.35 2011	423.35 2011	423.24 2009	423.20 2009	m ü.M.
Monats-Amplitude Jahr	0.43 2013	0.20 2010	0.22 2011	0.19 - 2011	0.36 2015	0.58 + 2016	0.26 2016	0.26 2013	0.29 2015	0.31 2015	0.30 2012	0.26 2013	m ü.M.
Periode	Mittel: 423.86 Spitze: 425.08 (02.07.2013) Minimum: 423.03 (20.02.2016) Amplitude: 2.05												



Grundwasserstände

Nr. 6224 Hubletzen 4/09 - Cham

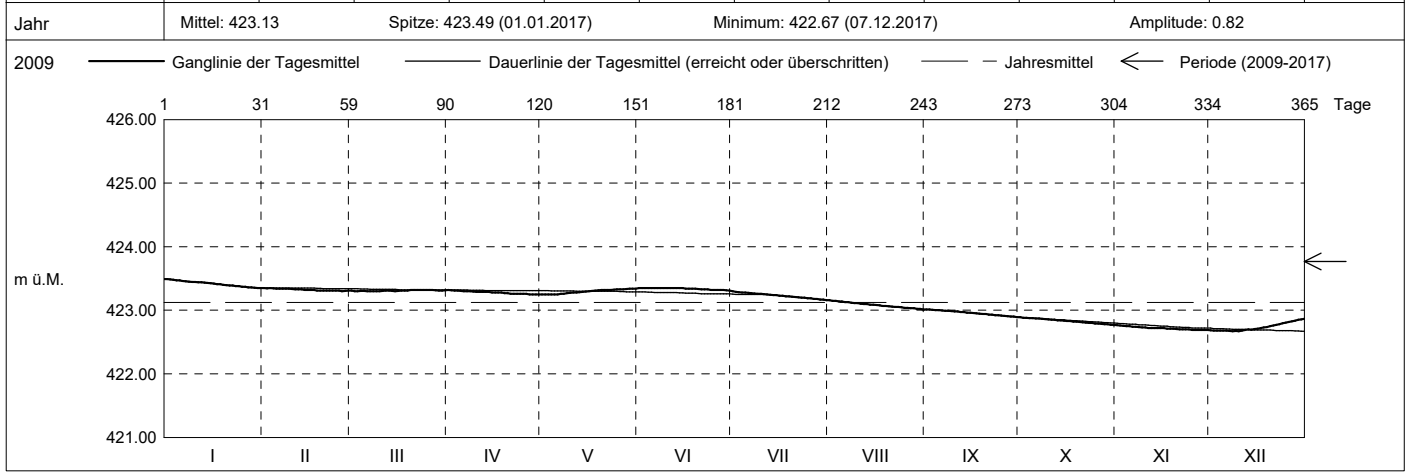
KANTON ZUG

Koordinaten: 2'675'352' / 1'230'219'

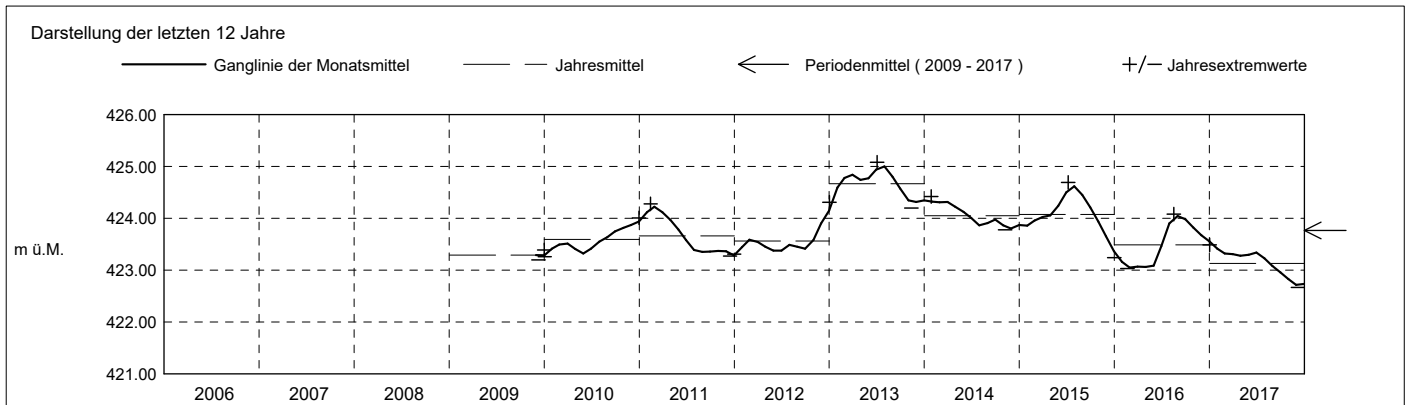
Amt für Umwelt

Abstichpunkt: 439.99 m ü.M. OK Terrain: 440.16 m ü.M.

2017	janvier	février	mars	avril	mai	juin	juillet	août	septembre	octobre	novembre	décembre	
Tagesmittel	1 423.49 +	423.35 +	423.31	423.32 +	423.25 -	423.35 +	423.30 +	423.16 +	423.01 +	422.89 +	422.76 +	422.68	1
	2 423.48	423.35 +	423.30 -	423.31	423.25 -	423.35 +	423.29	423.15	423.01 +	422.88	422.76 +	422.68	2
	3 423.48	423.35 +	423.30 -	423.31	423.25 -	423.35 +	423.29	423.15	423.01 +	422.88	422.76 +	422.68	3
	4 423.47	423.35 +	423.30 -	423.31	423.25 -	423.35 +	423.28	423.14	423.00	422.88	422.75	422.68	4
	5 423.47	423.34	423.30 -	423.31	423.25 -	423.35 +	423.28	423.14	423.00	422.88	422.75	422.68	5
	6 423.46	423.34	423.30 -	423.30	423.25 -	423.35 +	423.27	423.13	423.00	422.87	422.74	422.68	6
	7 423.45	423.34	423.30 -	423.30	423.26	423.35 +	423.27	423.13	422.99	422.87	422.74	422.67 -	7
	8 423.45	423.34	423.30 -	423.30	423.26	423.35 +	423.27	423.12	422.99	422.86	422.74	422.67 -	8
	9 423.45	423.34	423.30 -	423.29	423.27	423.35 +	423.26	423.11	422.99	422.86	422.73	422.68	9
	10 423.45	423.33	423.30 -	423.29	423.27	423.35 +	423.26	423.11	422.98	422.86	422.73	422.67 -	10
m ü.M.	11 423.44	423.33	423.30 -	423.29	423.28	423.35 +	423.25	423.10	422.98	422.85	422.72	422.68	11
	12 423.44	423.33	423.31	423.29	423.28	423.35 +	423.25	423.10	422.97	422.85	422.72	422.69	12
	13 423.44	423.33	423.31	423.29	423.28	423.35 +	423.24	423.10	422.97	422.84	422.72	422.70	13
	14 423.43	423.32	423.30 -	423.29	423.29	423.35 +	423.24	423.09	422.96	422.84	422.72	422.70	14
	15 423.42	423.32	423.30 -	423.28	423.29	423.35 +	423.24	423.09	422.96	422.83	422.72	422.71	15
	16 423.42	423.32	423.30 -	423.28	423.30	423.34	423.23	423.08	422.96	422.83	422.72	422.71	16
	17 423.41	423.32	423.31	423.28	423.30	423.34	423.23	423.08	422.95	422.83	422.71	422.72	17
	18 423.41	423.31	423.31	423.28	423.31	423.34	423.22	423.07	422.95	422.82	422.71	422.73	18
	19 423.40	423.31	423.31	423.27	423.31	423.34	423.22	423.07	422.94	422.82	422.71	422.74	19
	20 423.40	423.31	423.32 +	423.27	423.32	423.33	423.21	423.06	422.94	422.82	422.71	422.75	20
+ Maximum	21 423.39	423.31	423.32 +	423.26	423.32	423.33	423.21	423.06	422.93	422.81	422.70	422.76	21
	22 423.39	423.31	423.32 +	423.26	423.32	423.33	423.21	423.05	422.93	422.81	422.70	422.77	22
	23 423.38	423.31	423.32 +	423.26	423.32	423.33	423.20	423.05	422.92	422.80	422.70	422.78	23
	24 423.38	423.31	423.32 +	423.26	423.33	423.32	423.20	423.05	422.92	422.80	422.70	422.79	24
	25 423.37	423.31	423.32 +	423.26	423.33	423.32	423.19	423.04	422.92	422.79	422.69 -	422.80	25
	26 423.37	423.30 -	423.32 +	423.26	423.33	423.32	423.19	423.04	422.91	422.79	422.69 -	422.82	26
	27 423.36	423.30 -	423.32 +	423.25 -	423.33	423.32	423.18	423.03	422.91	422.78	422.69 -	422.83	27
	28 423.36	423.31	423.31	423.25 -	423.33	423.32	423.18	423.03	422.90	422.78	422.69 -	422.84	28
	29 423.35 -	423.31	423.31	423.25 -	423.34 +	423.32	423.17	423.02	422.90	422.78	422.69 -	422.85	29
	30 423.35 -	423.31	423.31	423.25 -	423.34 +	423.31 -	423.17	423.02	422.89 -	422.77 -	422.69 -	422.86 +	30
	31 423.35 -	423.31	423.31	423.25 -	423.34 +	423.31 -	423.16 -	423.01 -	422.89 -	422.77 -	422.69 -	422.86 +	31
Monatsmittel	423.42 +	423.32	423.31	423.28	423.30	423.34	423.23	423.08	422.96	422.83	422.72 -	422.74	m ü.M.
Spitze Datum	423.49 + 1.	423.35 1.	423.32 20.	423.32 1.	423.34 28.	423.35 1.	423.30 1.	423.16 1.	423.01 1.	422.89 1.	422.77 - 1.	422.87 31.	m ü.M.
Amplitude	0.15	0.05	0.02 -	0.07	0.09	0.05	0.14	0.15	0.12	0.12	0.09	0.20 +	m
Jahr	Mittel: 423.13 Spitze: 423.49 (01.01.2017) Minimum: 422.67 (07.12.2017) Amplitude: 0.82												



Periode	2009 - 2017 (8 Jahre)												
Monatsmittel	423.79	423.84	423.84	423.77	423.75	423.83	423.88 +	423.84	423.78	423.70	423.62 -	423.62 -	m ü.M.
Monats-Spitze Jahr	424.74 2013	424.89 2013	424.92 2013	424.83 2013	424.86 2013	425.04 2013	425.08 + 2013	424.93 2013	424.69 2013	424.46 2013	424.42 - 2013	424.44 2013	m ü.M.
Monats-Minimum Jahr	423.09 2016	423.03 2016	423.03 2016	423.03 2016	423.04 2016	423.18 + 2016	423.16 2017	423.01 2017	422.89 2017	422.77 2017	422.68 2017	422.67 - 2017	m ü.M.
Monats-Amplitude Jahr	0.43 2013	0.20 2010	0.22 2011	0.19 - 2011	0.36 2015	0.58 + 2016	0.26 2016	0.26 2013	0.29 2015	0.31 2015	0.30 2012	0.26 2013	m ü.M.
Periode	Mittel: 423.77 Spitze: 425.08 (02.07.2013) Minimum: 422.67 (07.12.2017) Amplitude: 2.41												



Grundwasserstände

Nr. 6224 Hubletzen 4/09 - Cham

KANTON ZUG

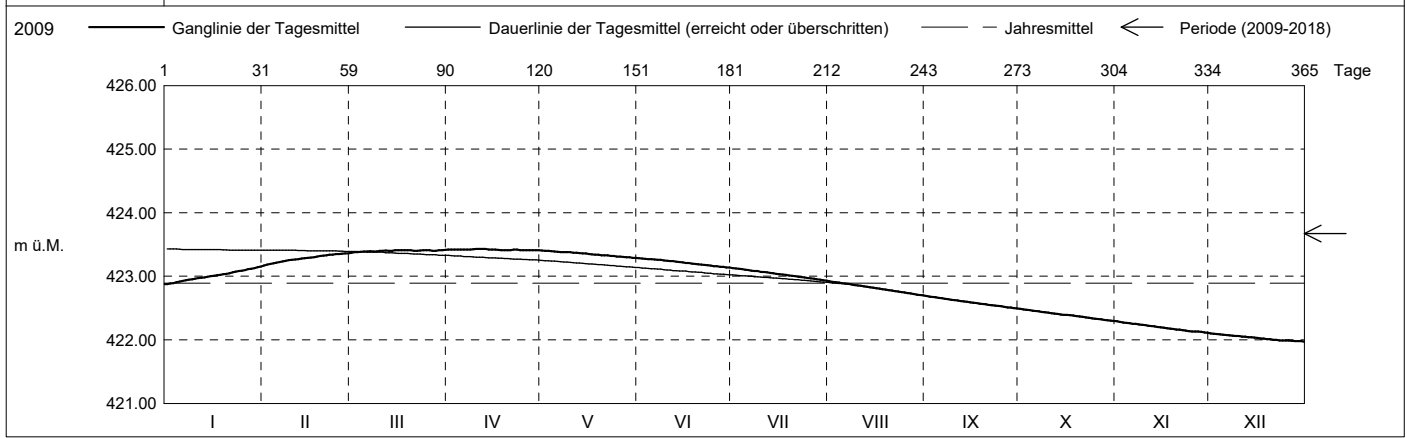
Koordinaten: 2'675'352' / 1'230'219'

Amt für Umwelt

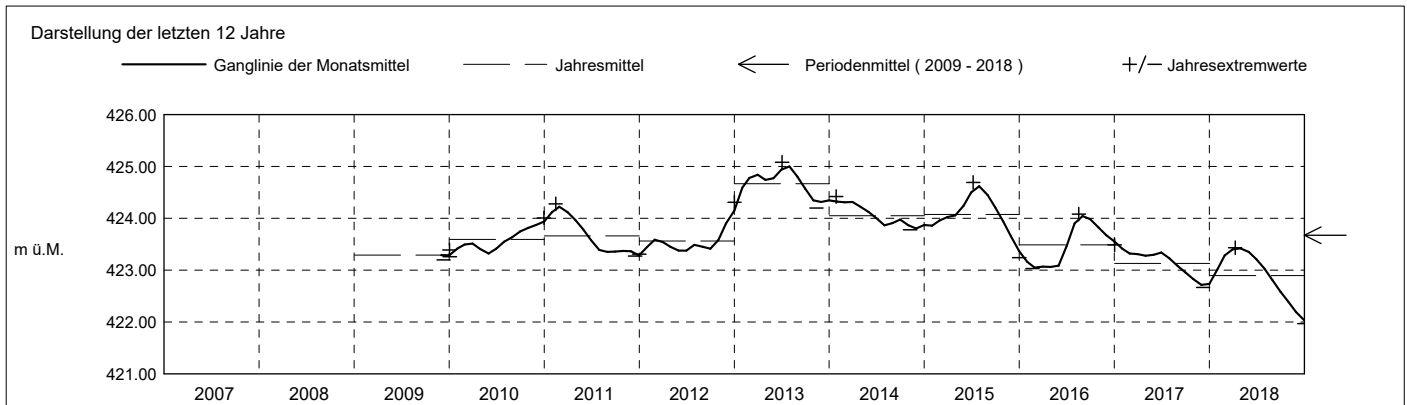
Abstichpunkt: 439.99 m ü.M. OK Terrain: 440.16 m ü.M.

2018	janvier	février	mars	avril	mai	juin	juillet	août	septembre	octobre	novembre	décembre	
Tagesmittel	1 422.87 -	423.17 -	423.37 -	423.42	423.40 +	423.28 +	423.13 +	422.92 +	422.69 +	422.49 +	422.29 +	422.10 +	1
	2 422.88	423.18	423.38	423.42	423.40 +	423.28 +	423.12	422.91	422.68	422.48	422.28	422.10 +	2
	3 422.89	423.20	423.38	423.42	423.40 +	423.27	423.12	422.91	422.67	422.47	422.27	422.09	3
	4 422.90	423.21	423.38	423.42	423.39	423.27	423.11	422.90	422.67	422.47	422.27	422.09	4
	5 422.92	423.21	423.39	423.42	423.39	423.27	423.10	422.89	422.66	422.46	422.26	422.08	5
	6 422.93	423.23	423.39	423.42	423.38	423.26	423.10	422.89	422.65	422.45	422.25	422.08	6
	7 422.94	423.23	423.40	423.42	423.38	423.26	423.09	422.88	422.65	422.45	422.25	422.07	7
	8 422.95	423.24	423.39	423.42	423.38	423.26	423.08	422.87	422.64	422.44	422.24	422.07	8
	9 422.95	423.25	423.39	423.42	423.38	423.25	423.08	422.86	422.63	422.43	422.23	422.06	9
	10 422.96	423.26	423.40	423.43 +	423.38	423.24	423.07	422.86	422.63	422.43	422.23	422.06	10
m ü.M.	11 422.97	423.27	423.40	423.43 +	423.37	423.24	423.07	422.85	422.62	422.42	422.22	422.05	11
	12 422.98	423.27	423.41 +	423.43 +	423.37	423.24	423.06	422.84	422.61	422.41	422.22	422.05	12
	13 422.98	423.28	423.40	423.43 +	423.37	423.23	423.05	422.84	422.60	422.41	422.21	422.04	13
	14 422.99	423.29	423.40	423.42	423.36	423.22	423.05	422.83	422.60	422.40	422.20	422.04	14
	15 423.00	423.29	423.41 +	423.42	423.36	423.22	423.04	422.82	422.59	422.39	422.20	422.03	15
	16 423.01	423.29	423.41 +	423.42	423.35	423.21	423.03	422.81	422.58	422.39	422.19	422.03	16
	17 423.02	423.30	423.41 +	423.42	423.35	423.21	423.03	422.80	422.58	422.39	422.18	422.02	17
	18 423.02	423.31	423.41 +	423.41 -	423.34	423.20	423.02	422.80	422.57	422.38	422.18	422.02	18
	19 423.03	423.32	423.41 +	423.41 -	423.34	423.19	423.01	422.79	422.57	422.37	422.17	422.01	19
	20 423.04	423.32	423.41 +	423.41 -	423.33	423.19	423.01	422.78	422.56	422.37	422.16	422.01	20
+ Maximum	21 423.05	423.33	423.40	423.41 -	423.33	423.18	423.00	422.77	422.55	422.36	422.16	422.00	21
	22 423.06	423.34	423.40	423.42	423.33	423.18	422.99	422.77	422.55	422.35	422.15	422.00	22
	23 423.07	423.34	423.40	423.42	423.32	423.17	422.99	422.76	422.54	422.35	422.14	421.99	23
	24 423.08	423.35	423.41 +	423.41 -	423.32	423.17	422.98	422.75	422.53	422.34	422.14	421.99	24
	25 423.09	423.35	423.41 +	423.41 -	423.31	423.16	422.97	422.74	422.53	422.33	422.13	421.99	25
	26 423.10	423.35	423.41 +	423.41 -	423.31	423.16	422.96	422.74	422.52	422.33	422.13	421.99	26
	27 423.11	423.36 +	423.40	423.41 -	423.30	423.15	422.96	422.73	422.51	422.32	422.13	421.99	27
	28 423.12	423.36 +	423.40	423.41 -	423.30	423.15	422.95	422.72	422.51	422.31	422.12	421.98	28
	29 423.13		423.41 +	423.41 -	423.30	423.14 -	422.94	422.71	422.50	422.31	422.12	421.98	29
	30 423.14		423.41 +	423.41 -	423.29 -	423.14 -	422.94	422.71	422.49 -	422.30	422.11 -	421.98	30
31 423.15 +		423.41 +	423.41 -	423.29 -	423.14 -	422.93 -	422.70 -	422.49 -	422.29 -	422.11 -	421.97 -	31	
Monatsmittel	423.01	423.28	423.40	423.42 +	423.35	423.21	423.03	422.81	422.59	422.39	422.19	422.03 -	m ü.M.
Spitze Datum	423.16 31.	423.37 28.	423.42 31.	423.43 + 9.	423.41 1.	423.29 1.	423.13 1.	422.93 1.	422.69 1.	422.49 1.	422.29 1.	422.11 - 1.	m ü.M.
Amplitude	0.29 +	0.21	0.05	0.02 -	0.12	0.16	0.20	0.24	0.20	0.20	0.18	0.14	m

Jahr Mittel: 422.89 Spitze: 423.43 (09.04.2018) Minimum: 421.97 (30.12.2018) Amplitude: 1.46



Periode	2009 - 2018 (9 Jahre)												
Monatsmittel	423.70	423.78	423.79 +	423.73	423.71	423.76	423.79 +	423.73	423.65	423.55	423.48	423.46 -	m ü.M.
Monats-Spitze Jahr	424.74 2013	424.89 2013	424.92 2013	424.83 2013	424.86 2013	425.04 2013	425.08 + 2013	424.93 2013	424.69 2013	424.46 2013	424.42 - 2013	424.44 2013	m ü.M.
Monats-Minimum Jahr	422.87 2018	423.03 2016	423.03 2016	423.03 2016	423.04 2016	423.13 + 2018	422.93 2018	422.69 2018	422.49 2018	422.29 2018	422.11 2018	421.97 - 2018	m ü.M.
Monats-Amplitude Jahr	0.43 2013	0.21 2018	0.22 2011	0.19 - 2011	0.36 2015	0.58 + 2016	0.26 2016	0.26 2013	0.29 2015	0.31 2015	0.30 2012	0.26 2013	m ü.M.
Periode	Mittel: 423.67 Spitze: 425.08 (02.07.2013) Minimum: 421.97 (30.12.2018) Amplitude: 3.11												



Grundwasserstände

Nr. 6224 Hubletzen 4/09 - Cham

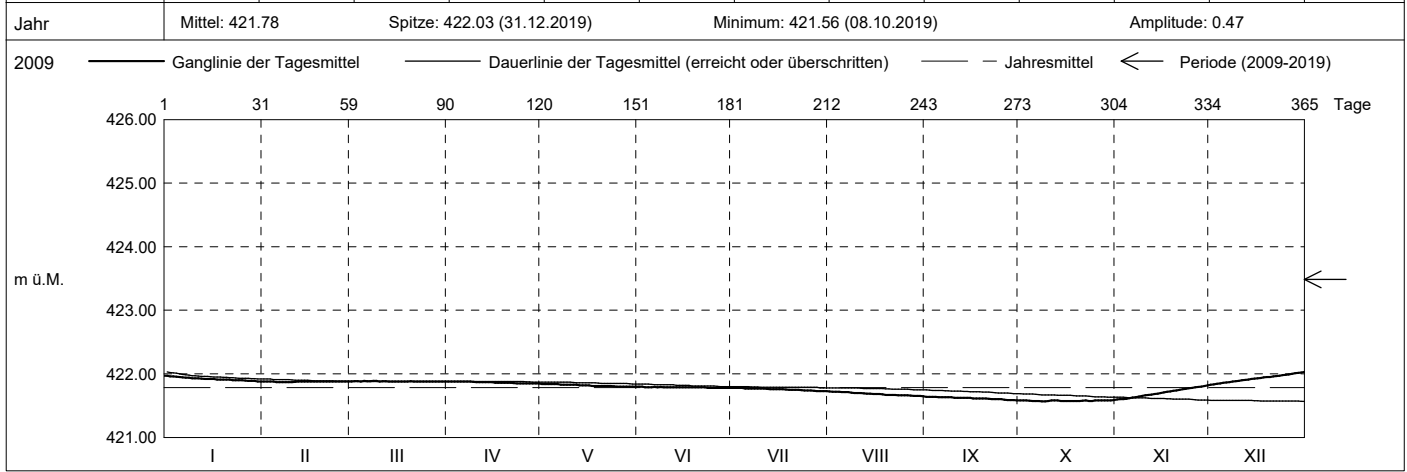
KANTON ZUG

Koordinaten: 2'675'352' / 1'230'219'

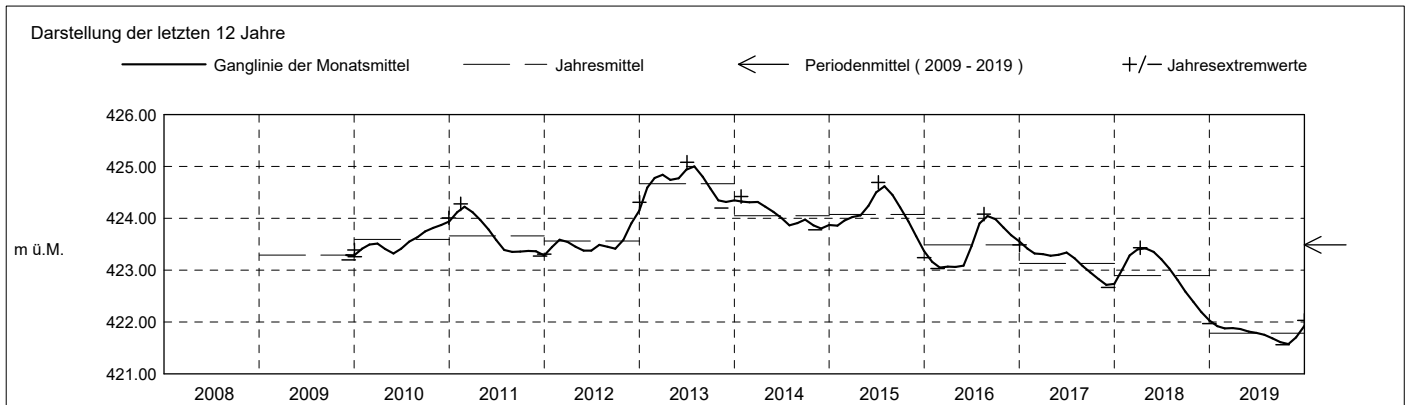
Amt für Umwelt

Abstichpunkt: 439.99 m ü.M. OK Terrain: 440.16 m ü.M.

2019	janvier	février	mars	avril	mai	juin	juillet	août	septembre	octobre	novembre	décembre	
Tagesmittel	1 421.97 +	421.88 +	421.88 -	421.88 +	421.84 +	421.80 +	421.78 +	421.72 +	421.64 +	421.58	421.60 -	421.83 -	1
	2 421.96	421.88 +	421.88 -	421.88 +	421.84 +	421.80 +	421.78 +	421.72 +	421.64 +	421.58	421.60 -	421.83 -	2
	3 421.96	421.88 +	421.88 -	421.88 +	421.84 +	421.79	421.78 +	421.72 +	421.64 +	421.58	421.60 -	421.84 -	3
	4 421.96	421.88 +	421.88 -	421.88 +	421.84 +	421.79	421.78 +	421.72 +	421.64 +	421.58	421.61	421.85	4
	5 421.95	421.87 -	421.89 +	421.88 +	421.84 +	421.79	421.77	421.71	421.63	421.57 -	421.62	421.86	5
	6 421.95	421.87 -	421.88 -	421.88 +	421.84 +	421.79	421.77	421.71	421.63	421.57 -	421.63	421.86	6
	7 421.94	421.87 -	421.88 -	421.88 +	421.83	421.79	421.77	421.71	421.63	421.57 -	421.63	421.87	7
	8 421.94	421.87 +	421.89 +	421.88 +	421.83	421.79	421.77	421.71	421.63	421.57 -	421.64	421.88	8
	9 421.93	421.87 -	421.89 +	421.87	421.83	421.79	421.77	421.70	421.63	421.57 -	421.65	421.88	9
	10 421.93	421.87 -	421.88 -	421.87	421.83	421.79	421.77	421.70	421.62	421.57 -	421.66	421.89	10
m ü.M.	11 421.93	421.88 +	421.88 -	421.87	421.83	421.79	421.77	421.70	421.62	421.58	421.67	421.90	11
	12 421.92	421.88 +	421.88 -	421.87	421.83	421.79	421.76	421.69	421.62	421.58	421.67	421.90	12
	13 421.92	421.88 +	421.88 -	421.87	421.82	421.79	421.76	421.69	421.62	421.58	421.68	421.91	13
	14 421.92	421.88 +	421.88 -	421.87	421.82	421.79	421.76	421.69	421.62	421.57 -	421.69	421.92	14
	15 421.92	421.88 +	421.88 -	421.87	421.82	421.79	421.76	421.68	421.62	421.57 -	421.70	421.92	15
	16 421.92	421.88 +	421.88 -	421.86	421.82	421.79	421.76	421.68	421.61	421.57 -	421.71	421.93	16
	17 421.91	421.88 +	421.88 -	421.86	421.81	421.79	421.76	421.68	421.61	421.57 -	421.72	421.94	17
	18 421.91	421.88 +	421.88 -	421.86	421.81	421.79	421.75	421.68	421.61	421.57 -	421.72	421.94	18
	19 421.91	421.88 +	421.88 -	421.86	421.81	421.79	421.75	421.67	421.61	421.57 -	421.73	421.95	19
	20 421.91	421.88 +	421.88 -	421.86	421.81	421.79	421.75	421.67	421.61	421.57 -	421.74	421.95	20
+ Maximum	21 421.91	421.88 +	421.88 -	421.86	421.81	421.79	421.75	421.67	421.60	421.58	421.75	421.96	21
	22 421.90	421.88 +	421.88 -	421.85	421.81	421.79	421.75	421.67	421.60	421.58	421.76	421.97	22
	23 421.90	421.88 +	421.88 -	421.85	421.81	421.78 -	421.74	421.66	421.60	421.57 -	421.76	421.97	23
	24 421.90	421.88 +	421.88 -	421.85	421.80 -	421.78 -	421.74	421.66	421.60	421.57 -	421.77	421.98	24
	25 421.90	421.88 +	421.88 -	421.85	421.80 -	421.78 -	421.74	421.66	421.60	421.58	421.78	421.98	25
	26 421.90	421.88 +	421.88 -	421.85	421.80 -	421.78 -	421.74	421.66	421.59	421.58	421.79	421.99	26
	27 421.89	421.88 +	421.88 -	421.85	421.80 -	421.78 -	421.73 -	421.66	421.59	421.58	421.79	422.00	27
	28 421.89	421.88 +	421.88 -	421.85	421.80 -	421.78 -	421.73 -	421.65 -	421.59	421.58	421.80	422.01	28
	29 421.89	421.88 +	421.88 -	421.85	421.80 -	421.78 -	421.73 -	421.65 -	421.59	421.58	421.81	422.01	29
	30 421.88 -	421.88 -	421.88 -	421.85 -	421.80 -	421.78 -	421.73 -	421.65 -	421.58 -	421.58	421.82 +	422.02	30
31 421.88 -	421.88 -	421.88 -	421.85 -	421.80 -	421.78 -	421.73 -	421.65 -	421.58 -	421.59 +	421.82 +	422.03 +	31	
Monatsmittel	421.92	421.88	421.88	421.86	421.82	421.79	421.76	421.68	421.61	421.58 -	421.70	421.93 +	m ü.M.
Spitze Datum	421.97 1.	421.88 1.	421.89 2.	421.88 1.	421.84 1.	421.80 1.	421.78 1.	421.73 1.	421.64 1.	421.59 - 30.	421.82 30.	422.03 + 31.	m ü.M.
Amplitude	0.09	0.01 -	0.01 -	0.04	0.04	0.02	0.05	0.09	0.06	0.03	0.23 +	0.21	m
Jahr	Mittel: 421.78		Spitze: 422.03 (31.12.2019)				Minimum: 421.56 (08.10.2019)				Amplitude: 0.47		



Periode	2009 - 2019 (10 Jahre)												
Monatsmittel	423.53	423.59	423.60 +	423.55	423.52	423.56	423.58	423.52	423.44	423.35	423.32 -	423.32 -	m ü.M.
Monats-Spitze Jahr	424.74 2013	424.89 2013	424.92 2013	424.83 2013	424.86 2013	425.04 2013	425.08 + 2013	424.93 2013	424.69 2013	424.46 2013	424.42 - 2013	424.44 2013	m ü.M.
Monats-Minimum Jahr	421.88 + 2019	421.87 2019	421.88 + 2019	421.84 2019	421.80 2019	421.78 2019	421.73 2019	421.64 2019	421.58 2019	421.56 - 2019	421.59 2019	421.82 2019	m ü.M.
Monats-Amplitude Jahr	0.43 2013	0.21 2018	0.22 2011	0.19 - 2011	0.36 2015	0.58 + 2016	0.26 2016	0.26 2013	0.29 2015	0.31 2015	0.30 2012	0.26 2013	m ü.M.
Periode	Mittel: 423.49		Spitze: 425.08 (02.07.2013)				Minimum: 421.56 (08.10.2019)				Amplitude: 3.52		



Grundwasserstände

Nr. 6224 Hubletzen 4/09 - Cham

KANTON ZUG

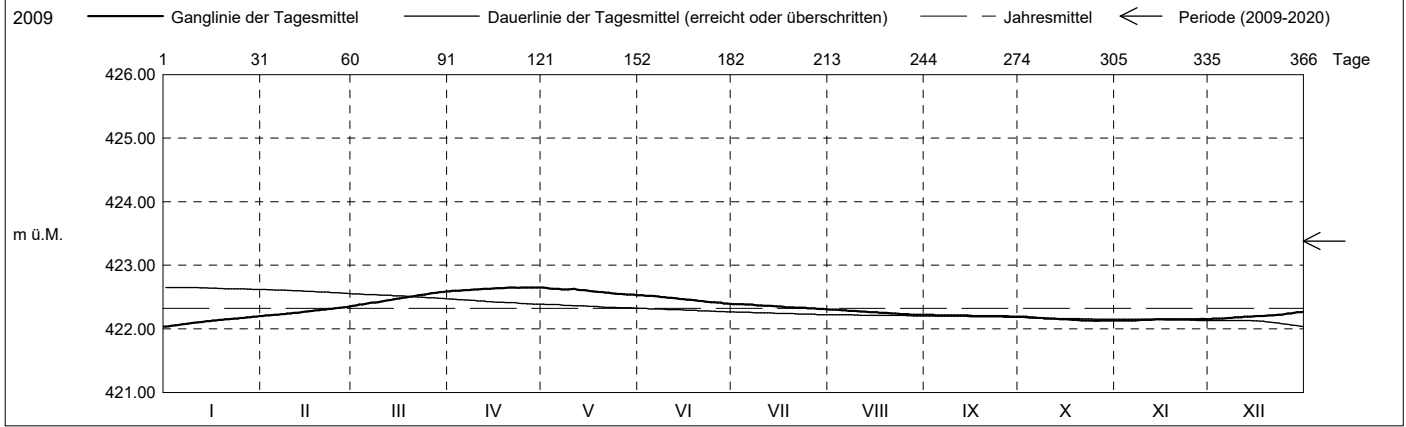
Koordinaten: 2'675'352' / 1'230'219'

Amt für Umwelt

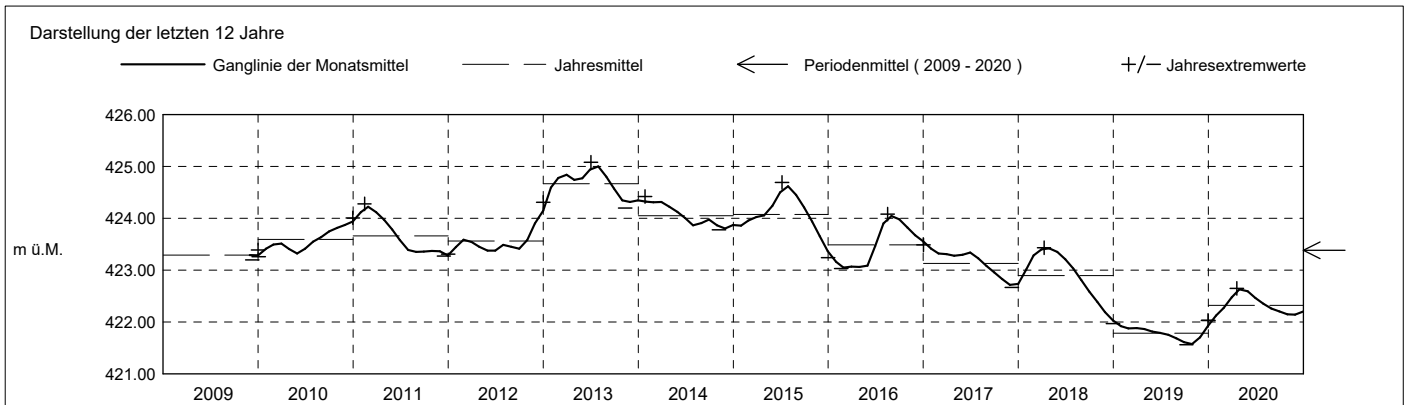
Abstichpunkt: 439.99 m ü.M. OK Terrain: 440.16 m ü.M.

2020	janvier	février	mars	avril	mai	juin	juillet	août	septembre	octobre	novembre	décembre	
Tagesmittel	1 422.04 -	422.20 -	422.36 -	422.59 -	422.65 +	422.53 +	422.39 +	422.30 +	422.22 +	422.19 +	422.13 -	422.15 -	1
	2 422.04 -	422.21	422.37	422.60	422.64	422.53 +	422.39 +	422.30 +	422.22 +	422.19 +	422.13 -	422.16	2
	3 422.05	422.21	422.38	422.60	422.64	422.52	422.39 +	422.30 +	422.22 +	422.19 +	422.13 -	422.16	3
	4 422.05	422.22	422.38	422.60	422.63	422.52	422.39 +	422.29	422.21	422.18	422.13 -	422.16	4
	5 422.06	422.22	422.39	422.60	422.63	422.52	422.38	422.29	422.21	422.18	422.13 -	422.16	5
	6 422.07	422.22	422.40	422.61	422.63	422.51	422.38	422.29	422.21	422.18	422.13 -	422.16	6
	7 422.08	422.23	422.41	422.61	422.62	422.51	422.38	422.28	422.21	422.17	422.13 -	422.17	7
	8 422.08	422.23	422.41	422.61	422.62	422.50	422.37	422.28	422.21	422.17	422.13 -	422.17	8
	9 422.09	422.24	422.42	422.62	422.62	422.50	422.37	422.28	422.21	422.16	422.14	422.18	9
	10 422.09	422.24	422.43	422.62	422.62	422.49	422.37	422.28	422.21	422.16	422.14	422.18	10
m ü.M.	11 422.10	422.25	422.44	422.62	422.63	422.49	422.36	422.27	422.21	422.16	422.14	422.18	11
	12 422.11	422.25	422.45	422.63	422.61	422.48	422.36	422.27	422.21	422.16	422.14	422.19	12
	13 422.11	422.26	422.46	422.63	422.61	422.48	422.36	422.27	422.21	422.15	422.15	422.19	13
	14 422.12	422.26	422.46	422.63	422.61	422.47	422.36	422.26	422.21	422.15	422.15	422.19	14
	15 422.12	422.27	422.47	422.63	422.60	422.47	422.35	422.26	422.21	422.15	422.15	422.20	15
	16 422.13	422.28	422.48	422.64	422.59	422.46	422.35	422.25	422.20	422.14	422.15	422.20	16
	17 422.13	422.28	422.49	422.64	422.59	422.46	422.35	422.25	422.20	422.14	422.15	422.20	17
	18 422.14	422.29	422.49	422.64	422.58	422.45	422.34	422.25	422.20	422.14	422.15	422.20	18
	19 422.14	422.29	422.50	422.64	422.58	422.45	422.34	422.25	422.20	422.14	422.15	422.21	19
	20 422.15	422.30	422.51	422.65 +	422.58	422.44	422.34	422.25	422.20	422.14	422.15	422.21	20
+ Maximum	21 422.15	422.30	422.52	422.65 +	422.57	422.44	422.33	422.24	422.20	422.13	422.15	422.21	21
	22 422.15	422.31	422.53	422.65 +	422.57	422.43	422.33	422.24	422.20	422.13	422.15	422.21	22
	23 422.16	422.31	422.53	422.64	422.56	422.42	422.33	422.23	422.20	422.13	422.15	422.22	23
	24 422.16	422.32	422.54	422.65 +	422.55	422.42	422.33	422.23	422.20	422.13	422.15	422.22	24
	25 422.17	422.33	422.55	422.65 +	422.55	422.42	422.32	422.23	422.20	422.12 -	422.15	422.23	25
	26 422.17	422.33	422.56	422.65 +	422.55	422.41	422.32	422.23	422.20	422.13	422.15	422.24	26
	27 422.18	422.34	422.57	422.65 +	422.54	422.41	422.32	422.22 -	422.20	422.13	422.15	422.24	27
	28 422.18	422.34	422.57	422.65 +	422.54	422.40	422.32	422.22 -	422.19 -	422.13	422.16 +	422.25	28
	29 422.19	422.35 +	422.58	422.65 +	422.54	422.40	422.31 -	422.22 -	422.19 -	422.13	422.16 +	422.26	29
	30 422.19		422.58	422.65 +	422.54	422.39 -	422.31 -	422.22 -	422.19 -	422.13	422.15	422.26	30
31 422.20 +		422.59 +	422.65 +	422.53 -		422.31 -	422.22 -		422.13		422.27 +	31	
Monatsmittel	422.12 -	422.27	422.48	422.63 +	422.59	422.46	422.35	422.26	422.21	422.15	422.14	422.20	m ü.M.
Spitze Datum	422.20 31.	422.35 28.	422.59 31.	422.65 + 19.	422.65 + 1.	422.53 1.	422.39 1.	422.30 1.	422.22 1.	422.19 1.	422.16 - 28.	422.27 31.	m ü.M.
Amplitude	0.17	0.15	0.24 +	0.06	0.12	0.14	0.09	0.08	0.03 -	0.07	0.03 -	0.12	m

Jahr Mittel: 422.32 Spitze: 422.65 (19.04.2020) Minimum: 422.03 (01.01.2020) Amplitude: 0.62



Periode	2009 - 2020 (11 Jahre)												
Monatsmittel	423.40	423.47	423.50 +	423.46	423.43	423.46	423.47	423.41	423.33	423.24	423.22 -	423.23	m ü.M.
Monats-Spitze Jahr	424.74 2013	424.89 2013	424.92 2013	424.83 2013	424.86 2013	425.04 2013	425.08 + 2013	424.93 2013	424.69 2013	424.46 2013	424.42 - 2013	424.44 2013	m ü.M.
Monats-Minimum Jahr	421.88 + 2019	421.87 2019	421.88 + 2019	421.84 2019	421.80 2019	421.78 2019	421.73 2019	421.64 2019	421.58 2019	421.56 - 2019	421.59 2019	421.82 2019	m ü.M.
Monats-Amplitude Jahr	0.43 2013	0.21 2018	0.24 2020	0.19 - 2011	0.36 2015	0.58 + 2016	0.26 2016	0.26 2013	0.29 2015	0.31 2015	0.30 2012	0.26 2013	m ü.M.
Periode	Mittel: 423.38 Spitze: 425.08 (02.07.2013) Minimum: 421.56 (08.10.2019) Amplitude: 3.52												



Grundwasserstände

Nr. 6224 Hubletzen 4/09 - Cham

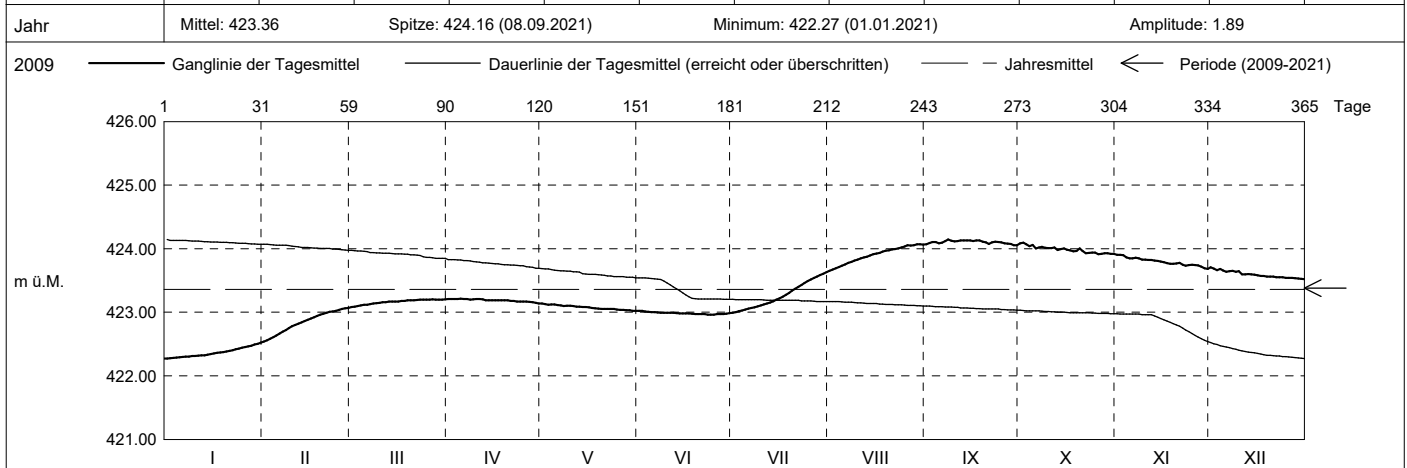
KANTON ZUG

Koordinaten: 2'675'352' / 1'230'219'

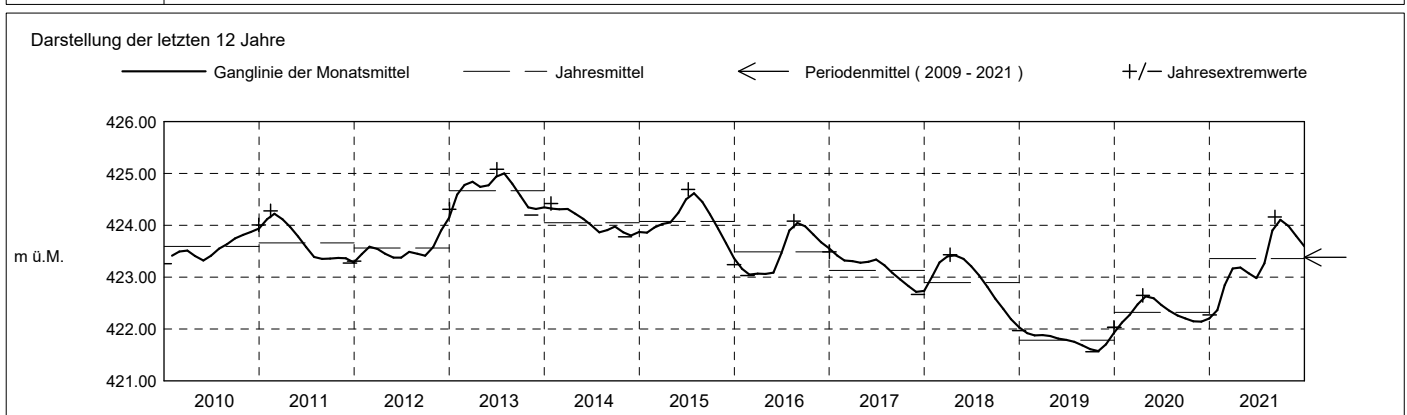
Amt für Umwelt

Abstichpunkt: 439.99 m ü.M. OK Terrain: 440.16 m ü.M.

2021	janvier	février	mars	avril	mai	juin	juillet	août	septembre	octobre	novembre	décembre	
Tagesmittel	1 422.27 -	422.54 -	423.08 -	423.21 +	423.14 +	423.02 +	422.99 -	423.65 -	424.07	424.08	423.91 +	423.71 +	1
	2 422.28	422.56	423.09	423.21 +	423.13	423.02 +	423.00	423.67	424.09	424.10 +	423.90	423.69	2
	3 422.28	422.58	423.10	423.21 +	423.12	423.01	423.02	423.69	424.11	424.07	423.90	423.66	3
	4 422.29	422.61	423.11	423.21 +	423.12	423.01	423.03	423.71	424.10	424.04	423.86	423.68	4
	5 422.29	422.64	423.12	423.21 +	423.13	423.00	423.04	423.73	424.09	424.06	423.85	423.66	5
	6 422.29	422.66	423.12	423.21 +	423.11	423.00	423.05	423.75	424.10	424.01	423.85	423.64	6
	7 422.30	422.69	423.13	423.21 +	423.11	423.00	423.07	423.77	424.12	424.02	423.86	423.65	7
	8 422.30	422.72	423.14	423.20	423.10	422.99	423.08	423.79	424.14 +	424.03	423.85	423.65	8
	9 422.31	422.75	423.15	423.20	423.10	422.99	423.09	423.81	424.12	424.01	423.83	423.64	9
	10 422.31	422.78	423.15	423.21 +	423.10	422.99	423.11	423.83	424.12	424.01	423.83	423.65	10
	11 422.32	422.80	423.16	423.21 +	423.10	422.99	423.12	423.85	424.12	424.01	423.82	423.60	11
	12 422.32	422.82	423.16	423.20	423.09	422.99	423.14	423.86	424.13	424.02	423.83	423.60	12
	13 422.32	422.84	423.17	423.19	423.09	422.99	423.15	423.88	424.13	423.98	423.82	423.60	13
	14 422.33	422.86	423.17	423.19	423.08	422.98	423.17	423.89	424.13	423.99	423.81	423.60	14
m ü.M.	15 422.34	422.88	423.17	423.19	423.08	422.98	423.20	423.92	424.13	424.01	423.80	423.59	15
	16 422.35	422.90	423.17	423.19	423.08	422.98	423.22	423.92	424.12	423.98	423.79	423.58	16
	17 422.36	422.92	423.18	423.19	423.07	422.98	423.25	423.93	424.13	423.97	423.77	423.57	17
	18 422.37	422.94	423.18	423.19	423.06	422.98	423.27	423.95	424.13	423.96	423.76	423.57	18
	19 422.37	422.96	423.19	423.19	423.06	422.97	423.30	423.97	424.11	423.96	423.76	423.56	19
	20 422.38	422.98	423.19	423.19	423.05	422.97	423.34	423.98	424.10	424.00	423.77	423.56	20
	21 422.39	422.99	423.19	423.18	423.05	422.97	423.37	423.99	424.08	423.96	423.78	423.56	21
	22 422.40	423.01	423.19	423.18	423.05	422.97	423.40	424.00	424.10	423.93	423.74	423.55	22
	23 422.42	423.01	423.20	423.17	423.05	422.96 -	423.43	424.01	424.11	423.93	423.73	423.55	23
	24 422.43	423.02	423.20	423.17	423.05	422.96 -	423.46	424.02	424.11	423.94	423.74	423.55	24
	25 422.44	423.04	423.20	423.17	423.04	422.96 -	423.49	424.04	424.10	423.94	423.74	423.54	25
+ Maximum	26 422.45	423.05	423.20	423.17	423.04	422.97	423.52	424.05	424.09	423.92 -	423.74	423.54	26
	27 422.46	423.06	423.20	423.16	423.04	422.97	423.54	424.05	424.08	423.92 -	423.74	423.54	27
- Minimum	28 422.47	423.07 +	423.20	423.16	423.03	422.97	423.56	424.05	424.08	423.93	423.72	423.54	28
	29 422.49		423.20	423.15	423.03	422.98	423.58	424.07 +	424.05 -	423.93	423.69	423.53	29
	30 422.51		423.20	423.14 -	423.02 -	422.98	423.61	424.07 +	424.06	423.92 -	423.68 -	423.52 -	30
	31 422.52 +		423.21 +	423.02 -	423.02 -		423.63 +	424.06		423.92 -		423.52 -	31
Monatsmittel	422.37 -	422.85	423.16	423.19	423.08	422.98	423.27	423.90	424.10 +	423.99	423.80	423.59	m ü.M.
Spitze Datum	422.53 - 31.	423.07 28.	423.21 27.	423.22 5.	423.14 1.	423.02 1.	423.64 31.	424.08 30.	424.16 + 8.	424.11 2.	423.92 1.	423.72 1.	m ü.M.
Amplitude	0.26	0.54	0.13	0.08	0.12	0.06 -	0.65 +	0.44	0.14	0.22	0.24	0.20	m
Jahr	Mittel: 423.36 Spitze: 424.16 (08.09.2021) Minimum: 422.27 (01.01.2021) Amplitude: 1.89												



Periode	2009 - 2021 (12 Jahre)												
Monatsmittel	423.31	423.42	423.47 +	423.44	423.40	423.42	423.45	423.45	423.39	423.31	423.26	423.25 -	m ü.M.
Monats-Spitze Jahr	424.74 2013	424.89 2013	424.92 2013	424.83 2013	424.86 2013	425.04 2013	425.08 + 2013	424.93 2013	424.69 2013	424.46 2013	424.42 - 2013	424.44 2013	m ü.M.
Monats-Minimum Jahr	421.88 + 2019	421.87 2019	421.88 + 2019	421.84 2019	421.80 2019	421.78 2019	421.73 2019	421.64 2019	421.58 2019	421.56 - 2019	421.59 2019	421.82 2019	m ü.M.
Monats-Amplitude Jahr	0.43 2013	0.54 2021	0.24 2020	0.19 - 2011	0.36 2015	0.58 2016	0.65 + 2021	0.44 2021	0.29 2015	0.31 2015	0.30 2012	0.26 2013	m ü.M.
Periode	Mittel: 423.38 Spitze: 425.08 (02.07.2013) Minimum: 421.56 (08.10.2019) Amplitude: 3.52												



Grundwasserstände

Nr. 6224 Hubletzen 4/09 - Cham

KANTON ZUG

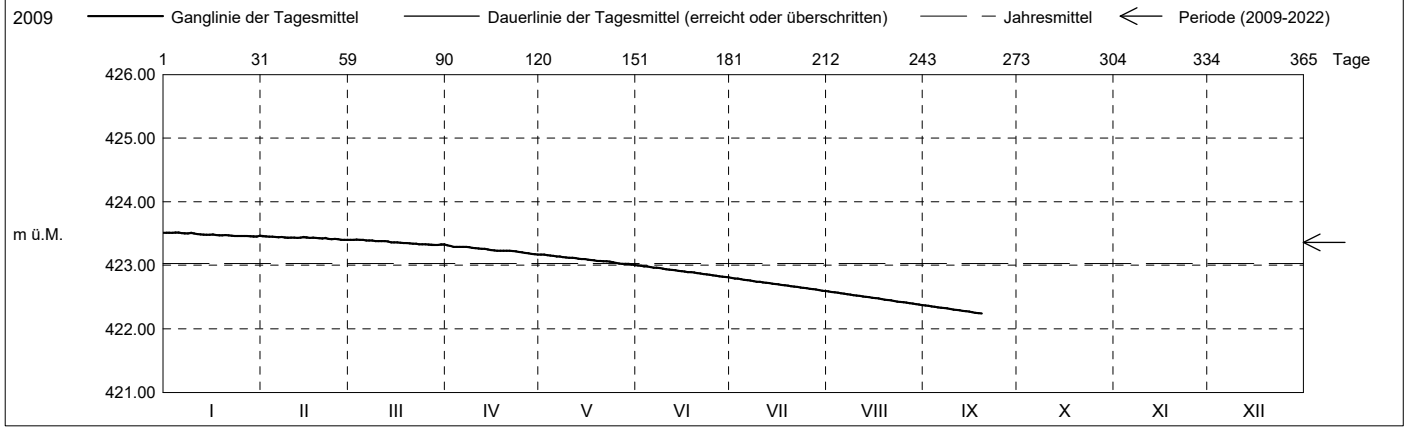
Koordinaten: 2'675'352' / 1'230'219'

Amt für Umwelt

Abstichpunkt: 439.99 m ü.M. OK Terrain: 440.16 m ü.M.

2022	janvier	février	mars	avril	mai	juin	juillet	août	septembre	octobre	novembre	décembre	
Tagesmittel	1 423.51	2 423.46 +	3 423.40 +	4 423.31 +	5 423.17 +	6 423.00 +	7 422.80 +	8 422.59 +	9 422.37 +				1 423.51
	2 423.51	3 423.45	4 423.40 +	5 423.29	6 423.16	7 422.98	8 422.79	9 422.58	10 422.36				2 423.51
	3 423.51	4 423.45	5 423.40 +	6 423.29	7 423.15	8 422.97	9 422.77	10 422.56	11 422.35				3 423.51
	4 423.52 +	5 423.45	6 423.40 +	7 423.29	8 423.15	9 422.97	10 422.77	11 422.56	12 422.34				4 423.52 +
	5 423.52 +	6 423.44	7 423.40 +	8 423.29	9 423.14	10 422.96	11 422.76	12 422.55	13 422.33				5 423.52 +
	6 423.51	7 423.44	8 423.39	9 423.29	10 423.14	11 422.96	12 422.76	13 422.55	14 422.33				6 423.51
	7 423.50	8 423.43	9 423.39	10 423.29	11 423.14	12 422.96	13 422.76	14 422.55	15 422.33				7 423.50
	8 423.50	9 423.43	10 423.39	11 423.29	12 423.13	13 422.96	14 422.75	15 422.54	16 422.32				8 423.50
	9 423.51	10 423.43	11 423.38	12 423.27	13 423.12	14 422.95	15 422.74	16 422.53	17 422.31				9 423.51
	10 423.50	11 423.44	12 423.38	13 423.27	14 423.12	15 422.94	16 422.74	17 422.52	18 422.30				10 423.50
	11 423.49	12 423.43	13 423.38	14 423.26	15 423.12	16 422.93	17 422.73	18 422.52	19 422.30				11 423.49
	12 423.48	13 423.43	14 423.38	15 423.26	16 423.11	17 422.93	18 422.72	19 422.51	20 422.29				12 423.48
	13 423.48	14 423.43	15 423.38	16 423.26	17 423.10	18 422.92	19 422.72	20 422.50	21 422.28				13 423.48
m ü.M.	14 423.48	15 423.43	16 423.36	17 423.25	18 423.10	19 422.91	20 422.71	21 422.50	22 422.28				14 423.48
	15 423.48	16 423.44	17 423.36	18 423.24	19 423.10	20 422.91	21 422.71	22 422.49	23 422.27				15 423.48
	16 423.47	17 423.43	18 423.36	19 423.23	20 423.08	21 422.89	22 422.69	23 422.48	24 422.26				16 423.47
	17 423.47	18 423.43	19 423.36	20 423.23	21 423.08	22 422.89	23 422.69	24 422.48	25 422.25				17 423.47
	18 423.47	19 423.43	20 423.35	21 423.23	22 423.07	23 422.88	24 422.68	25 422.47	26 422.25				18 423.47
	19 423.47	20 423.42	21 423.34	22 423.23	23 423.07	24 422.88	25 422.67	26 422.45	27 422.24				19 423.47
	20 423.48	21 423.43	22 423.34	23 423.23	24 423.07	25 422.88	26 422.67	27 422.45	28 422.24				20 423.48
	21 423.47	22 423.43	23 423.34	24 423.23	25 423.06	26 422.87	27 422.66	28 422.45	29 422.24				21 423.47
	22 423.46	23 423.42	24 423.34	25 423.22	26 423.06	27 422.86	28 422.66	29 422.44	30 422.23				22 423.46
	23 423.46	24 423.41	25 423.33	26 423.22	27 423.06	28 422.86	29 422.65	30 422.43	31 422.22				23 423.46
	24 423.46	25 423.42	26 423.33	27 423.21	28 423.05	29 422.85	30 422.64	31 422.42					24 423.46
	25 423.46	26 423.41	27 423.33	28 423.20	29 423.04	30 422.84	31 422.64	32 422.42					25 423.46
+ Maximum	26 423.46	27 423.40 -	28 423.32 -	29 423.19	30 423.03	31 422.84	32 422.63	33 422.41					26 423.46
	27 423.46	28 423.40 -	29 423.32 -	30 423.19	31 423.02	32 422.83	33 422.62	34 422.40					27 423.46
- Minimum	28 423.46	29 423.40 -	30 423.32 -	31 423.18	32 423.02	33 422.82	34 422.62	35 422.40					28 423.46
	29 423.45 -	30 423.32 -	31 423.17 -	32 423.02	33 422.82	34 422.61	35 422.39						29 423.45 -
	30 423.45 -	31 423.33	32 423.17 -	33 423.01	34 422.81	35 422.60	36 422.38						30 423.45 -
	31 423.46	32 423.33	33 423.17 -	34 423.00	35 422.80	36 422.60	37 422.37 -						31 423.46
Monatsmittel	423.48 +	423.43	423.36	423.24	423.09	422.90	422.70	422.48	422.30 -				m ü.M.
Spitze Datum	4. +	1. +	3. +	1. +	1. +	1. +	1. +	1. +	1. -				m ü.M.
Amplitude	0.07 -	0.07 -	0.10	0.15	0.17	0.19	0.22 +	0.22 +	0.13				m

Jahr Mittel: 423.03 Spitze: 423.52 (04.01.2022) Minimum: 422.24 (18.09.2022) Amplitude: 1.28



Periode	2009 - 2022 (13 Jahre)												
Monatsmittel	423.33	423.42	423.46 +	423.43	423.38	423.38	423.40	423.37	423.31	423.31	423.26	423.25 -	m ü.M.
Monats-Spitze Jahr	424.74 2013	424.89 2013	424.92 2013	424.83 2013	424.86 2013	425.04 2013	425.08 + 2013	424.93 2013	424.69 2013	424.46 2013	424.42 - 2013	424.44 2013	m ü.M.
Monats-Minimum Jahr	421.88 + 2019	421.87 2019	421.88 + 2019	421.84 2019	421.80 2019	421.78 2019	421.73 2019	421.64 2019	421.58 2019	421.56 - 2019	421.59 2019	421.82 2019	m ü.M.
Monats-Amplitude Jahr	0.43 2013	0.54 2021	0.24 2020	0.19 - 2011	0.36 2015	0.58 2016	0.65 + 2021	0.44 2021	0.29 2015	0.31 2015	0.30 2012	0.26 2013	m ü.M.
Periode	Mittel: 423.36 Spitze: 425.08 (02.07.2013) Minimum: 421.56 (08.10.2019) Amplitude: 3.52												

